



## Hall Farm Drive, TW2

£545,000

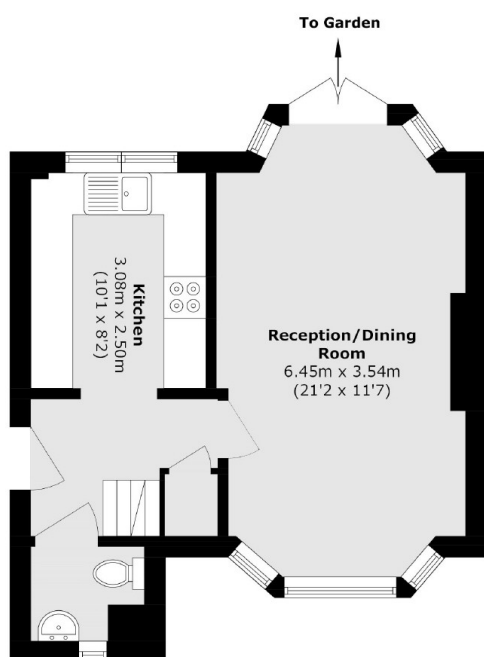
Offered with no onward chain is this three bedroom end of terrace 1930's house that would be a wonderful starter home for a family and it benefits from having side access and a pretty private rear garden.

Hall Farm Drive is a residential road of 1930's family houses located just off Warren Road. Twickenham and Whitton town centres and the mainline stations with their fast train links to London Waterloo are just a short distance away.

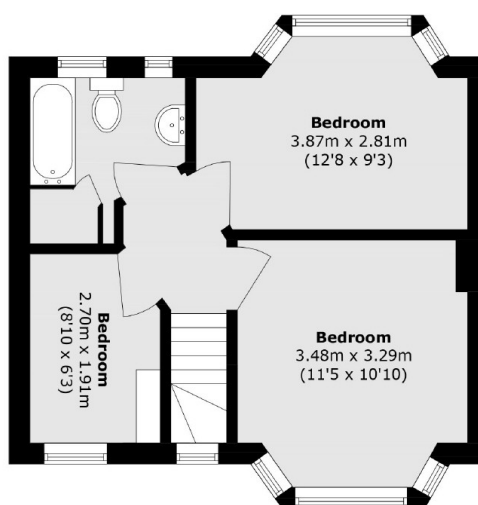
### Features

- No Onward Chain
- Three Bedrooms
- Good Condition
- Private Rear Garden
- Popular Location
- Close To Whitton Town Centre

# Hall Farm Drive, Whitton, TW2



**Ground Floor**



**First Floor**

Total area (approx.): 72.6 sq. m (781.4sq. ft)