



Augusta Road, TW2

£640,000

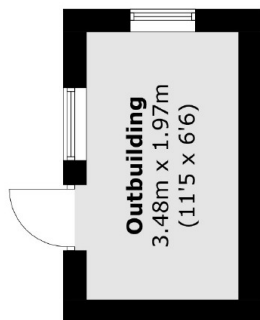
Offers Over £640,000. Offered with no onward chain is this spacious three bedroom semi detached 1930's house that benefits from having potential to extend the loft and rear as well as a large garden with a detached garage at the end with gated off street parking.

Augusta Road is a quiet residential road close to an array of transport links which will take you to Twickenham, Richmond and Teddington high streets. Fulwell mainline station is just under a mile and the area is renowned for its excellent schools such as the outstanding Waldegrave Girls.

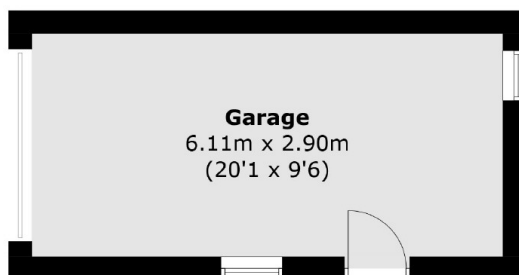
Features

- No Onward Chain
- Potential To Extend
- Large Garden
- Side Access
- Rear Access
- Garage

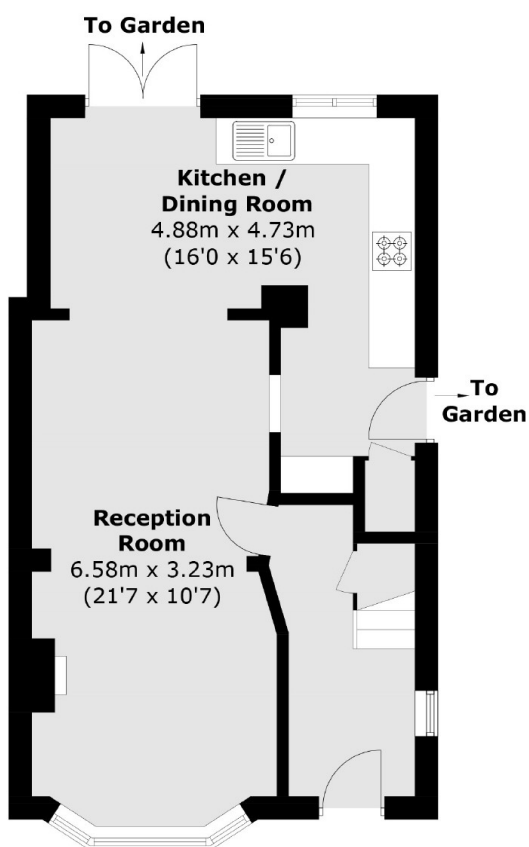
Augusta Road, Twickenham, TW2



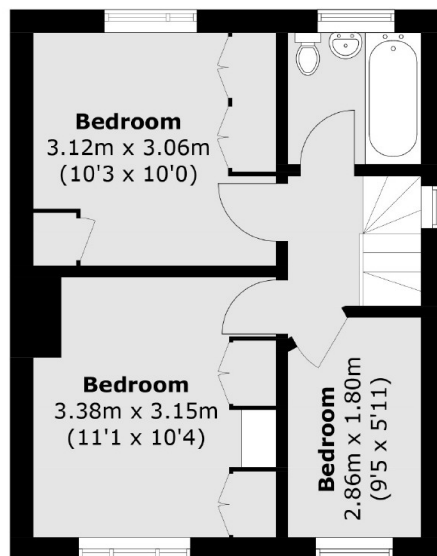
(Not Shown In Actual
Location / Orientation)



(Not Shown In Actual
Location / Orientation)



Ground Floor



First Floor

Total area (approx.): 77.5 sq. m (834.1 sq. ft)
Outbuildings: 7.0 sq. m (75.3 sq. ft)
Garage: 17.8 sq. m (191.5 sq. ft)