



## Grasmere Avenue, TW3

### £610,000

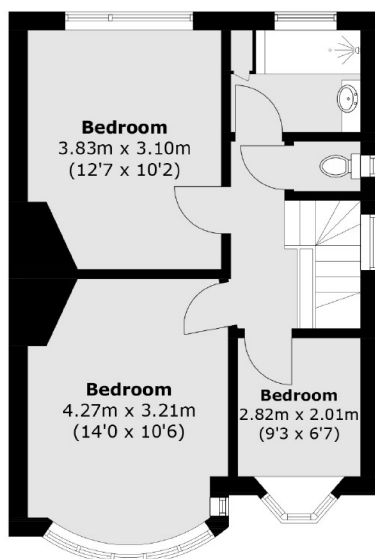
Offered with no onward chain is this spacious three bedroom semi detached 1930's house that could be a wonderful family home for years to come. It benefits from having a shared driveway to a garage, scope to extend both to the rear and loft if required and a lovely large garden.

Grasmere Avenue is a quiet residential road within close proximity to Whitton high street, where you will find a vast array of shops and fast trains to London Waterloo via Whittons mainline station.

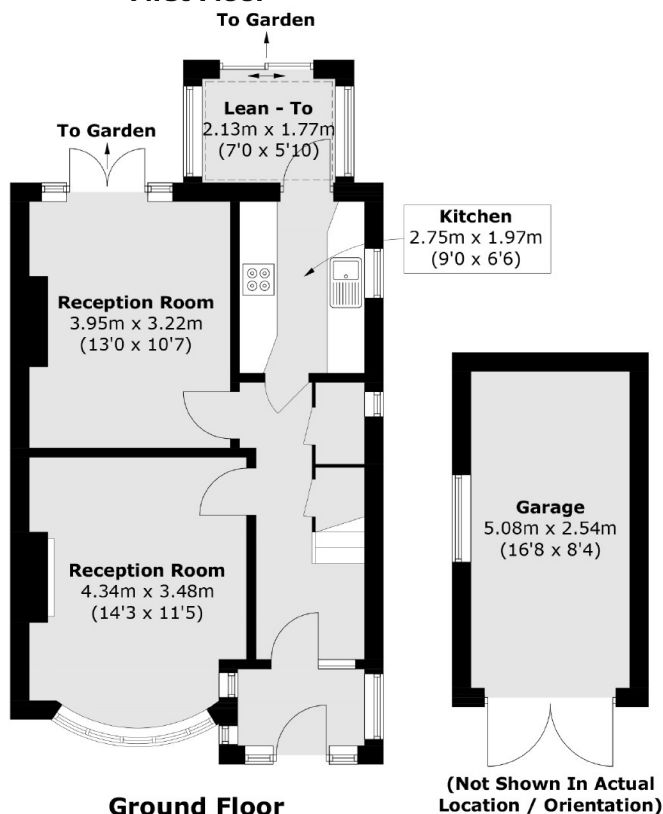
### Features

- Three Bedroom Home
- Semi Detached
- Large Garden
- Shared Driveway To Garage
- Potential To Extend STPP
- No Onward Chain

# Grasmere Avenue, , TW3



**First Floor**



**Ground Floor**

Total area (approx.): 90.7 sq. m (976.3 sq. ft)  
Garage (approx.): 13.2 sq. m (142.1 sq. ft)

## Dexters

Twickenham  
84 Heath Road  
Twickenham  
TW1 4BW  
Sales  
020 8744 0074

Energy Rating: D. We aim to make our particulars both accurate and reliable. However they are not guaranteed; nor do they form part of an offer or contract. If you require clarification on any points then please contact us, especially if you're traveling some distance to view. Please note that appliances and heating systems have not been tested and therefore no warranties can be given as to their good working order.

**RICS** Regulated  
Estate Agent  
and Letting Agent

dexters.co.uk