



Simpson Road, TW4

£2,000 Per calendar month

Three Double bedroom, split level apartment only moments from local amenities. Benefiting from separate kitchen, spacious reception rooms, family bathroom and ample storage.

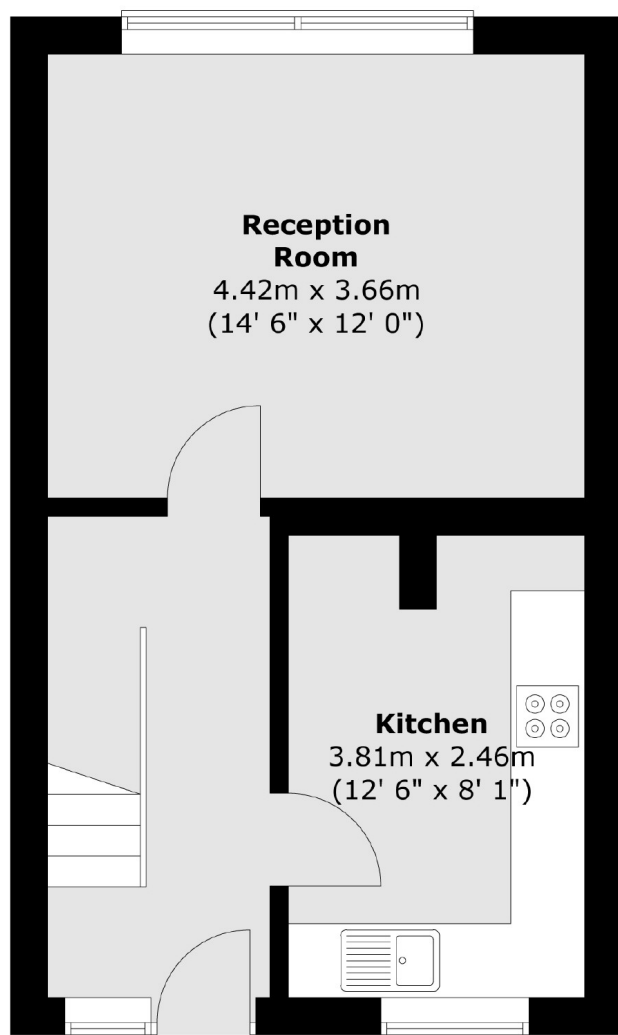
Simpson Road is a great location for families with links to and from London and Heathrow Airport.

Features

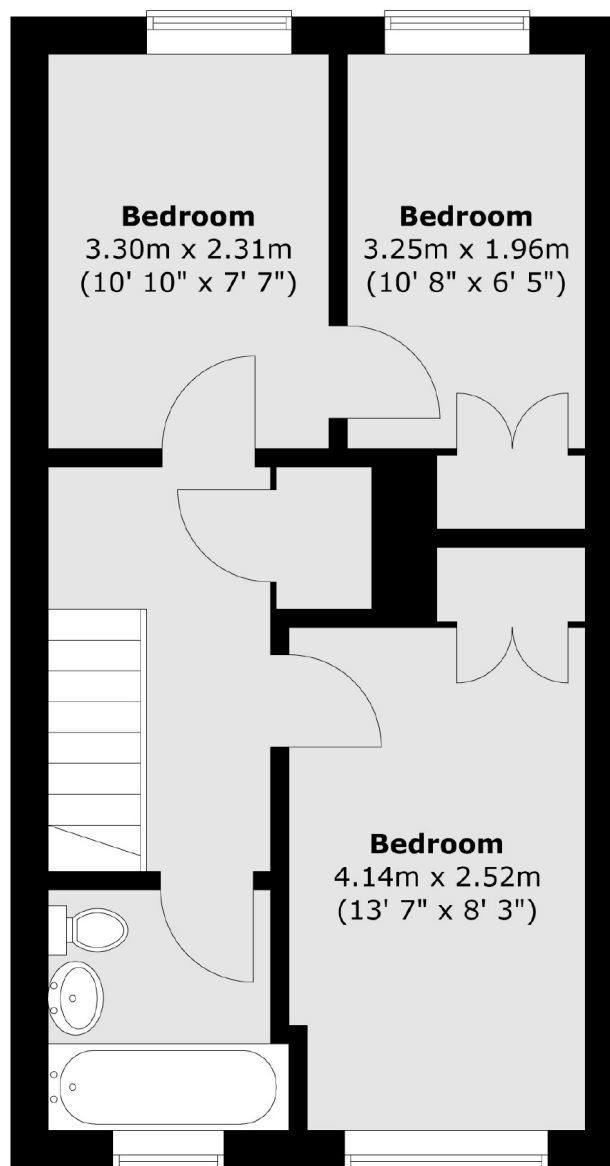
- Three Bedrooms
- Split Level
- Good Condition
- Family Bathroom
- On Street Parking
- Communal Gardens

Simpson Road, Hounslow, TW4

Third Floor



Fourth Floor



Total area (approx.) : 73.7 sq. m (793 sq. ft)