



**Strawberry Vale, TW1**  
**£5,500,000**

**Dexters**



## Strawberry Vale, TW1

Situated on the banks of the River Thames is this stunning six bedroom early Victorian villa that has been designed throughout by renowned local interior designer Claire Botha of Geek Vintique and benefits from having a 150ft riverside garden with a private mooring and boathouse.

Clyde House is an exceptional family home that seamlessly blends timeless Victorian character with refined contemporary living. Original period features such as ornate fireplaces, a grand staircase, galleried hallways and lofty ceilings have been carefully preserved and enhanced with sophisticated modern finishes. Large, beautifully crafted windows and doors not only fill the space with natural light but also highlight the outstanding craftsmanship and architectural integrity of this remarkable home.

Clyde House offers a rare opportunity to own a property of both historical significance and stylish comfort directly on the River Thames.

Strawberry Vale runs adjacent to the River Thames and is close to Teddington and Twickenham town centres, which offer a vast array of shops, bars, restaurants and independent boutiques. Strawberry Hill and Twickenham mainline stations are just half a mile away and provide routes to and from the city.

### Features

- Off Street Parking
- Cinema Room
- Home Gym
- Approx 4600sq Feet
- Private Mooring & Boathouse
- 150ft Riverside Garden







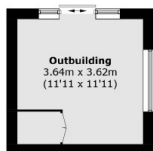




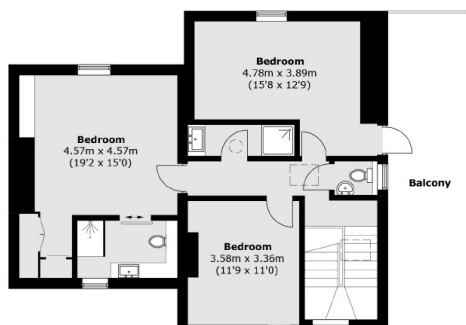




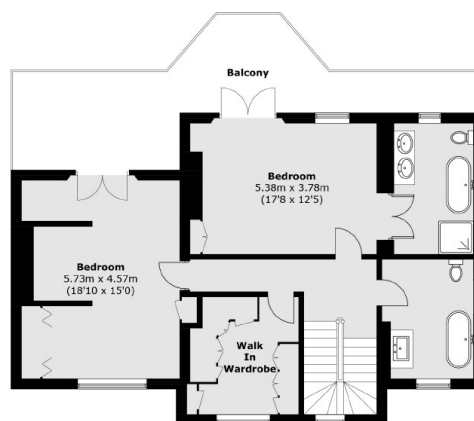
# Strawberry Vale, Strawberry Hill, TW1



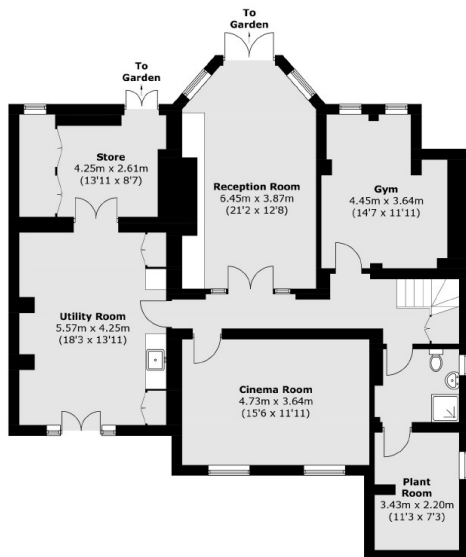
(Not Shown In Actual  
Location / Orientation)



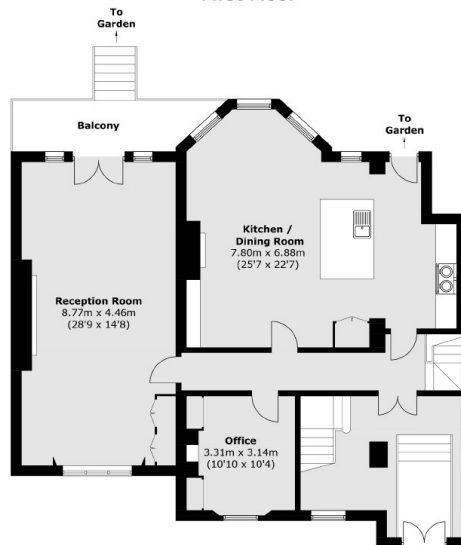
**Second Floor**



**First Floor**



**Lower Ground Floor**



**Raised Ground Floor**

Total area (approx.): 425.3 sq. m (4,577.9 sq. ft)  
Outbuilding area: 13.3 sq. m (143.2 sq. ft)  
Balcony: 58.4 sq. m (628.6 sq. ft)

## Dexters

Twickenham  
84 Heath Road  
Twickenham  
TW1 4BW

Sales  
020 8744 0074

Energy Rating: . We aim to make our particulars both accurate and reliable. However they are not guaranteed; nor do they form part of an offer or contract. If you require clarification on any points then please contact us, especially if you're traveling some distance to view. Please note that appliances and heating systems have not been tested and therefore no warranties can be given as to their good working order.

**RICS** Regulated  
Estate Agent  
and Letting Agent

dexters.co.uk