



## Radnor Road, TW1

£4,750 Per calendar month

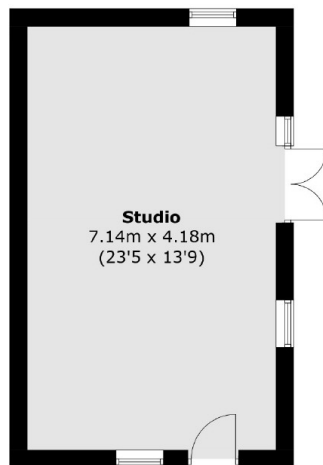
A rarely available four/five-bedroom family house that has just undergone a complete makeover. The property has an abundance of character and heart with an amazing open plan kitchen area to entertain in. The house is split over three floors with two full bathrooms, downstairs WC and utility area and a larger-than-life landscaped garden. This house also has the added bonus of a large summer house/studio which makes the perfect office space, gym or playroom.

Radnor Road is a highly desirable road linking the high street of Twickenham to Strawberry Hill village. The area is renowned for its excellent state and private schooling. Twickenham mainline station with its fast links to London Waterloo is within easy walking distance.

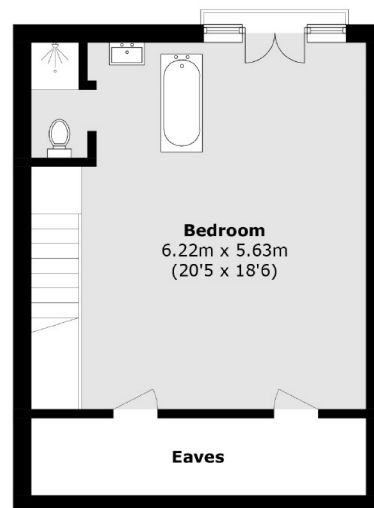
### Features

- Semi-Detached House
- Five Bedrooms
- Two Reception Rooms
- Beautiful Rear Garden
- Driveway For Two Cars
- Functioning Summer House

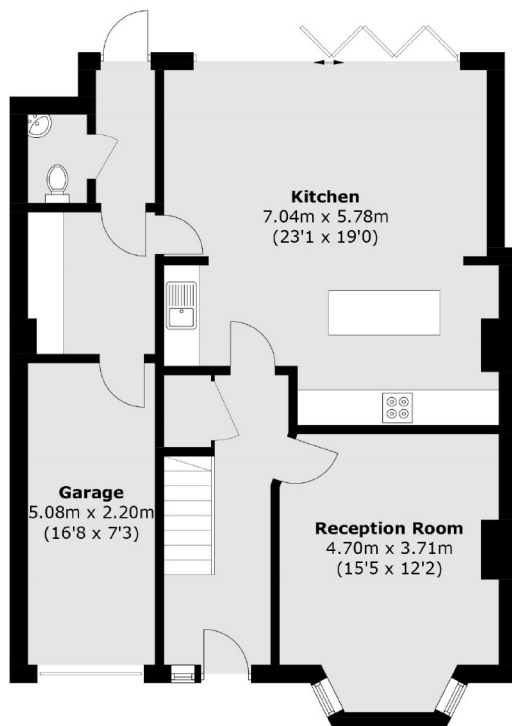
# Radnor Road, Twickenham, TW1



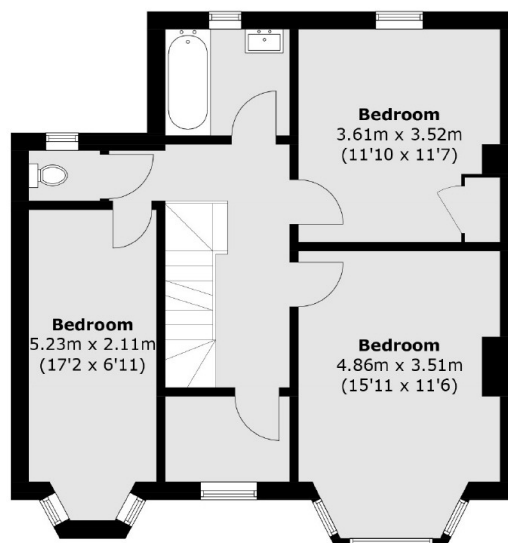
(Not Shown In Actual  
Location / Orientation)



**Second Floor**



**Ground Floor**



**First Floor**

Total area (approx.): 174.9 sq. m (1,882.5 sq. ft)  
Studio : 30.3 sq. m (326.1 sq. ft)