



Garfield Road, TW1

£250,000

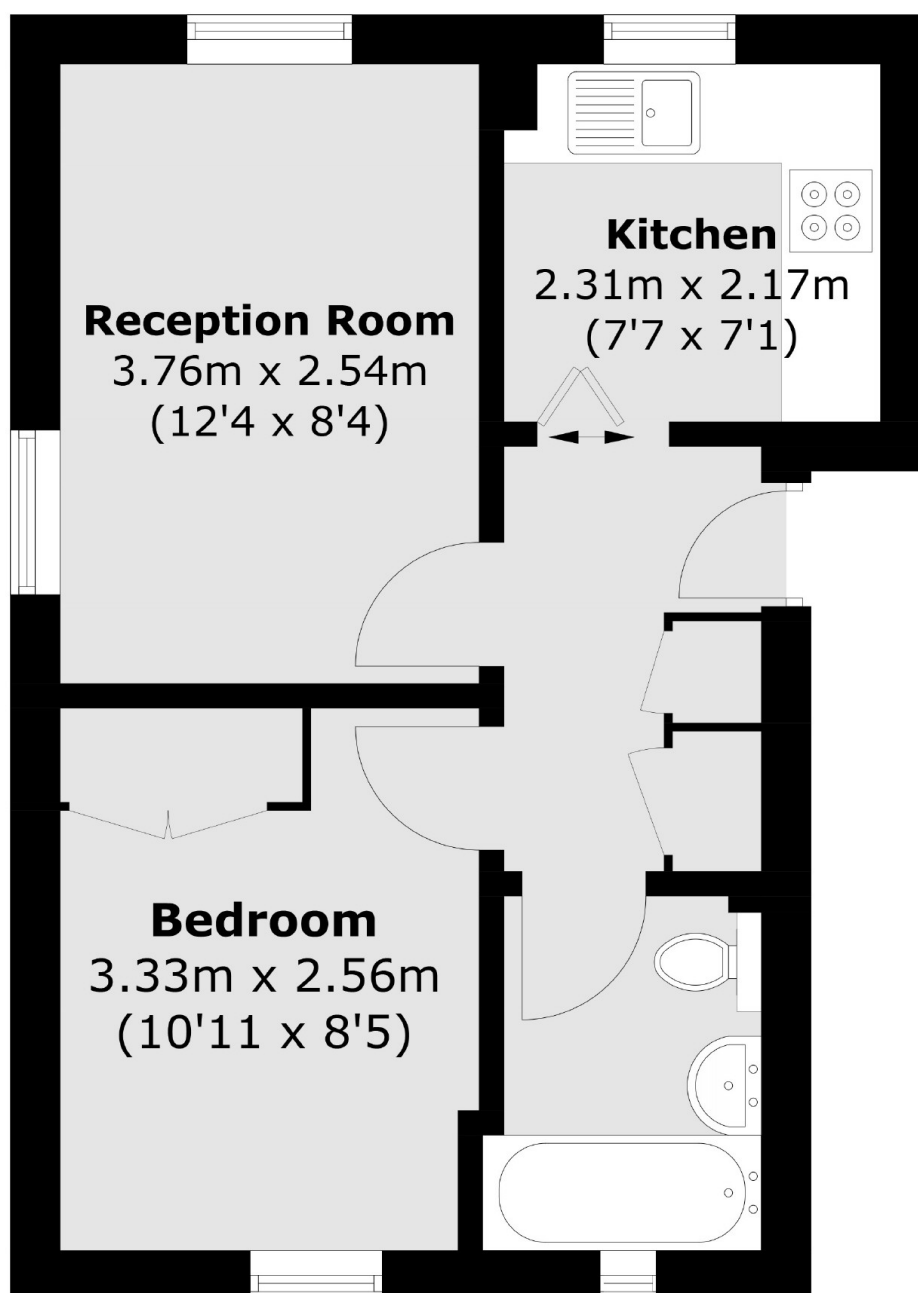
Offered with no onward chain is this one double bedroom purpose built apartment located in the heart of Twickenham town centre. Perfect as first time purchase or investment, this wonderful properties comes with a long lease and a secure entry phone system.

Garfield Road is located just moments from Twickenham town centre with its shops and restaurants, the River Thames and local parks. Twickenham mainline station with its fast links to London Waterloo is just a few hundred yards away.

Features

- No Onward Chain
- Long Lease
- Central Location
- One Double Bedroom
- Good Condition
- Secure Entry Phone System

Garfield Road, Twickenham, TW1



Total area (approx.): 32.3 sq. m (347.6 sq. ft)