



Nelson Road, TW2

£699,950

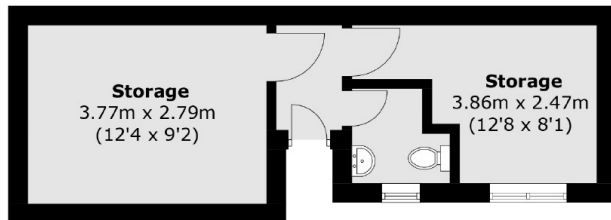
Offered with no onward chain is this impressive three bedroom semi-detached Victorian house located in the heart of Whitton and it benefits from having off street parking to the front, a downstairs W.C and a sunny South facing garden complete with a large outhouse/studio at the end.

Nelson Road is situated just off Whitton high street where you will find a vast array of shops, pubs and cafés including Starbucks. The area is also ideal for commuters as there is a fast link to London Waterloo via the mainline station and there are also a number of good schools nearby.

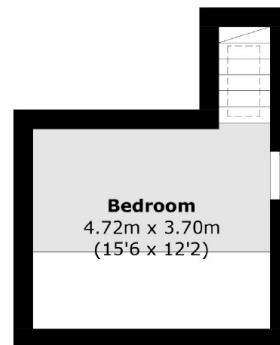
Features

- Three Bedrooms
- Downstairs W.C
- Off Street Parking
- Excellent Condition
- South Facing Garden
- Outbuilding/Studio

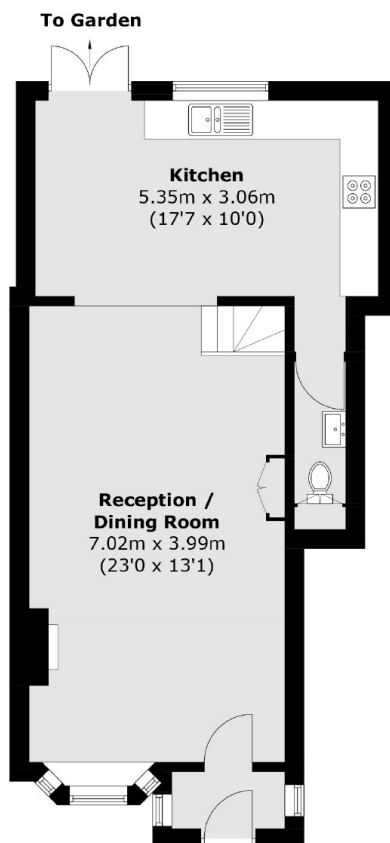
Nelson Road, Whitton, TW2



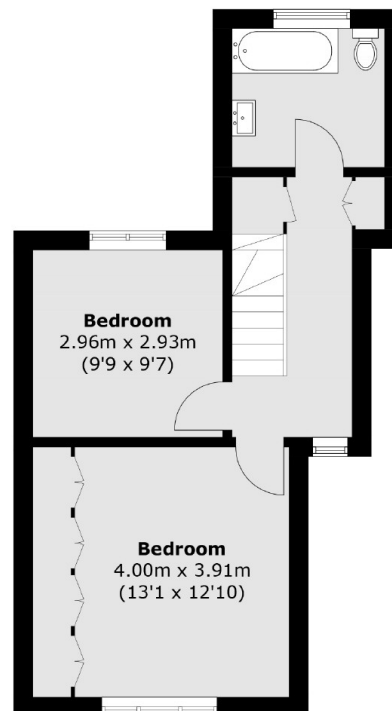
(Not Shown In Actual Location / Orientation)
Outbuilding



Second Floor



Ground Floor



First Floor

Total area (approx.): 102.7 sq. m (1,105.4 sq. ft)
Outbuilding: 22.1 sq. m (237.9 sq. ft)