



Walpole Gardens, TW2

£2,200 Per calendar month

This impressive two double bedroom period apartment occupies close to 700 sq ft and is presented to an exceptional standard throughout. The property benefits from a large shared garden, high ceilings, new windows and private parking.

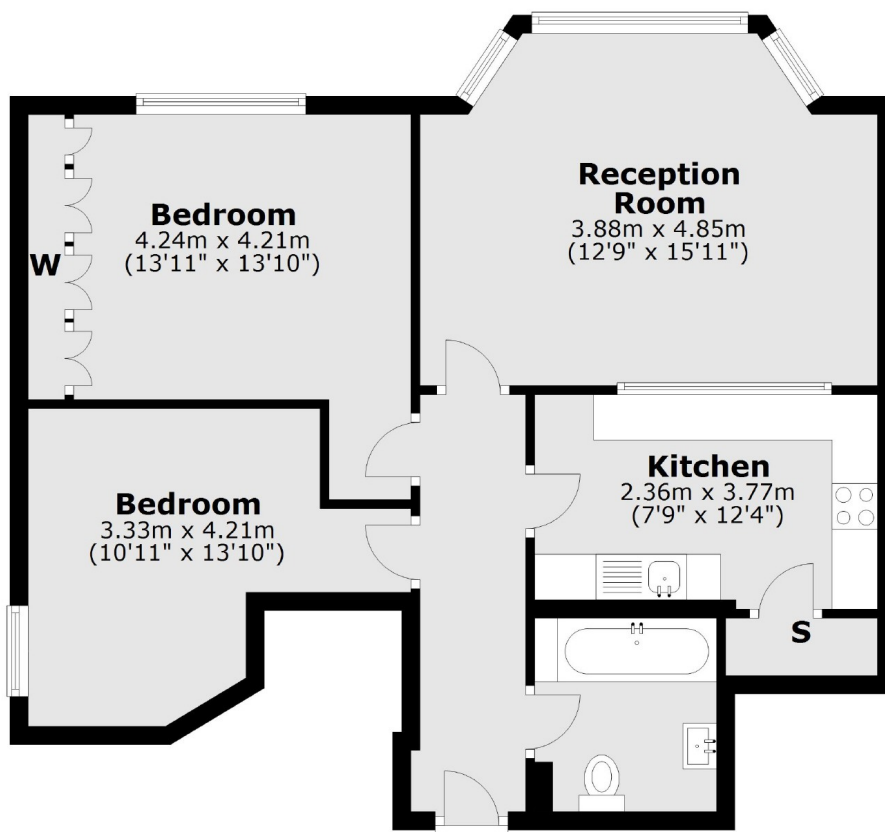
Walpole Gardens is located just round the corner from Strawberry Hill mainline station which has links to London Waterloo. The River Thames, Twickenham Green and Teddington and Twickenham town centres, with their shops, restaurants and bars, are all within half a mile.

Features

- Two Bedrooms
- Wooden Flooring
- Private Parking
- Large Shared Garden
- Unfurnished
- Period Features

Walpole Gardens, Twickenham, TW2

First Floor



Total area: approx. 64.8 sq. metres (697.4 sq. feet)