



Gladstone Avenue, TW2

£2,495 Per calendar month

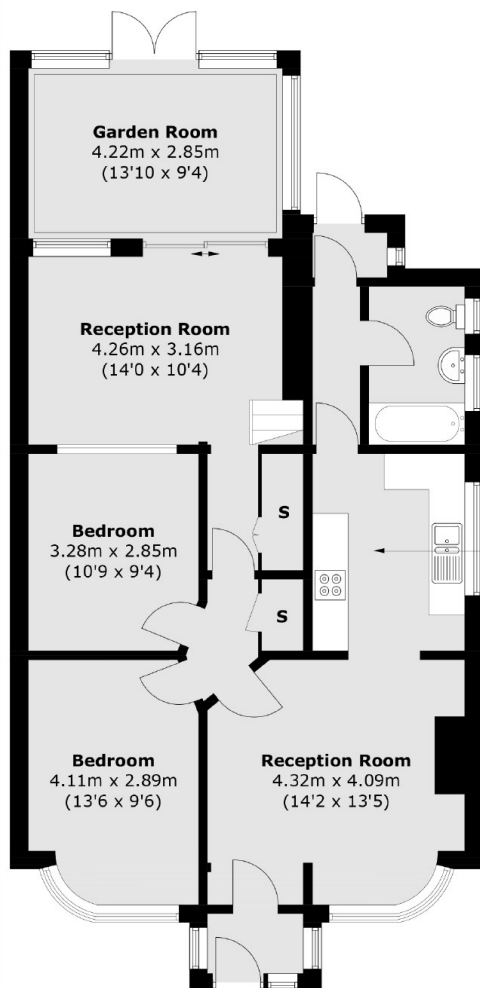
A deceptively spacious four bedroom bungalow recently refurbished to an excellent standard. With two reception rooms, a bright conservatory, study/walk in wardrobe, large South East facing garden and a garage.

Rosecroft Gardens is situated within the ever popular Rosebine development, close to many excellent schools and colleges. There is easy transport access to Twickenham, Richmond with their mainline stations less than half a mile away.

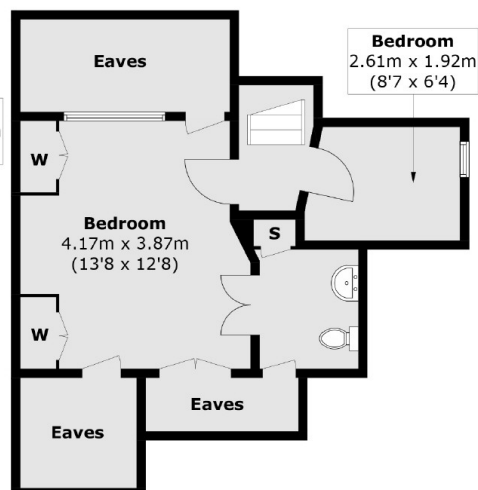
Features

- Four Bedrooms
- Conservatory
- Garage
- Modern New Kitchen
- Study
- Two Reception Rooms

Gladstone Avenue, Twickenham, TW2



Ground Floor



First Floor

Total area (approx.): 121.1 sq. m (1,303.5 sq. ft)
(Excluding Eaves)