



## Manor Road, TW2

### £345,000

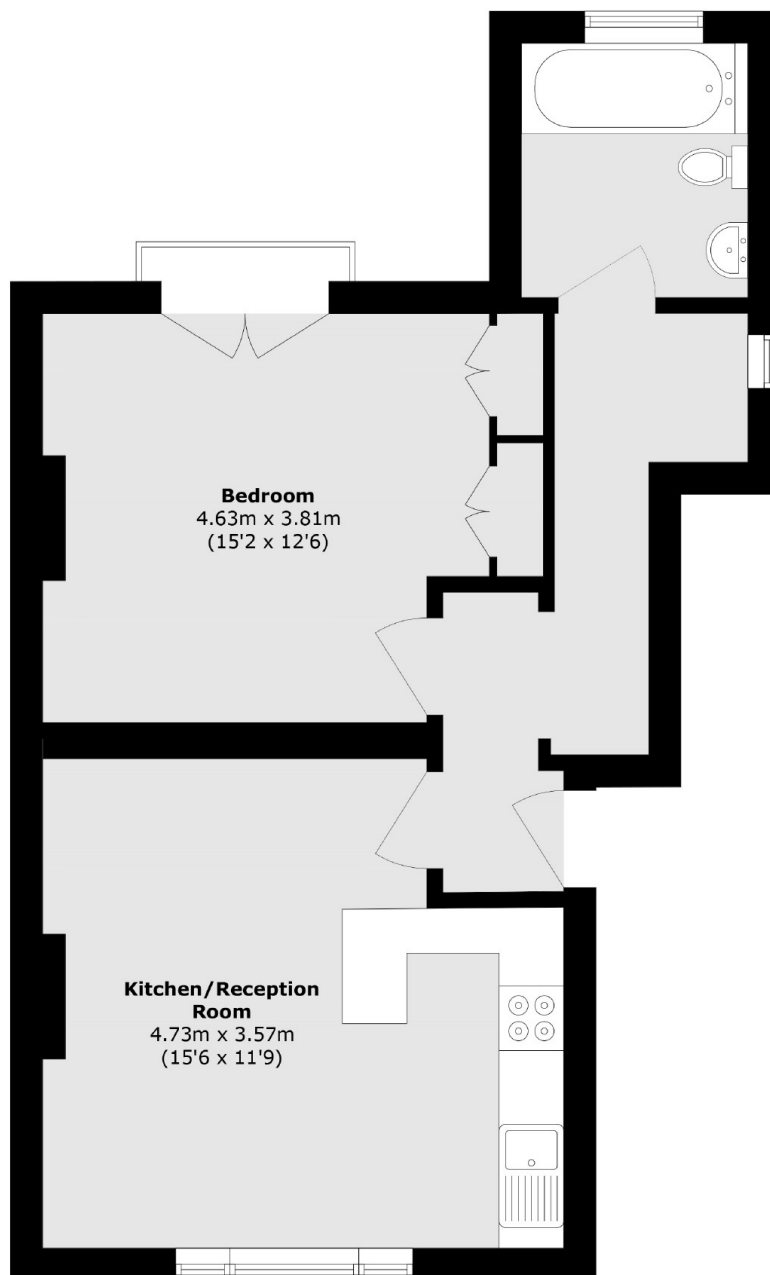
Offered with no onward chain is this charming one double bedroom conversion apartment situated on the raised ground floor of an impressive Victorian building. Further benefits include a new lease on completion of the sale as well as access to beautiful communal gardens to the rear.

Manor Road is close to excellent schools such as Waldegrave Girls and Trafalgar and Archdeacon. Twickenham Green and the high street is also less than a mile away which offers a wide variety of shops, pubs and restaurants.

### Features

- One Double Bedroom
- Victorian Conversion
- Raised Ground Floor
- No Onward Chain
- New Lease On Completion
- Beautiful Communal Gardens

# Manor Road, Twickenham, TW2



Total area (approx.): 51.7 sq. m (556.4 sq. ft)

## Dexters

Twickenham  
84 Heath Road  
Twickenham  
TW1 4BW  
Sales  
020 8744 0074

Energy Rating: D. We aim to make our particulars both accurate and reliable. However they are not guaranteed; nor do they form part of an offer or contract. If you require clarification on any points then please contact us, especially if you're traveling some distance to view. Please note that appliances and heating systems have not been tested and therefore no warranties can be given as to their good working order.

 **RICS** | Regulated  
Estate Agent  
and Letting Agent

[dexters.co.uk](https://www.dexters.co.uk)