



Thames Eyot, TW1

£685,000

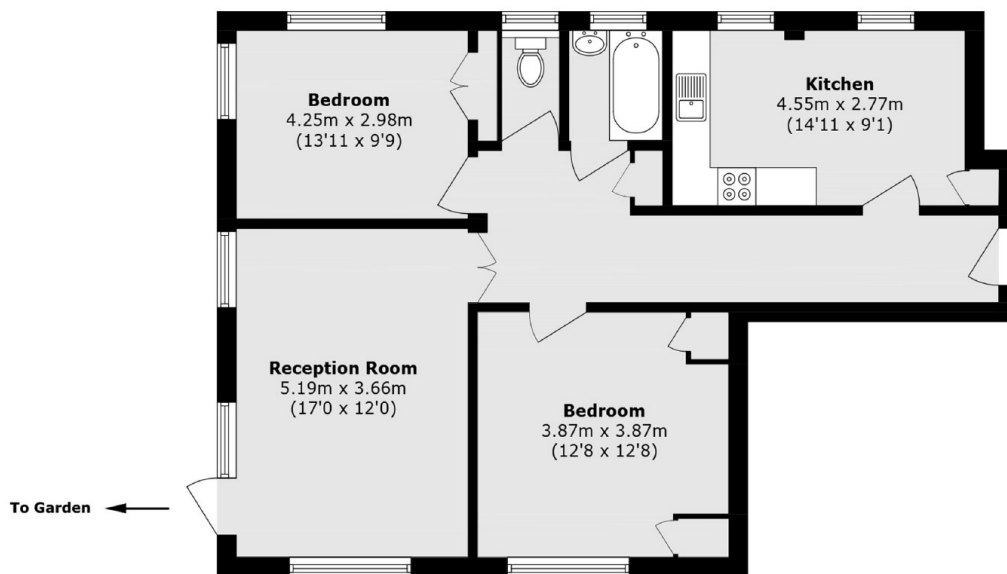
Offered with no onward chain is this large two double bedroom apartment overlooking the river Thames and it benefits from having double aspect views, access to beautiful riverside gardens, residents parking and an on-site porter.

The historic Thames Eyot development is situated on the banks of the River Thames and is within half a mile of Twickenham mainline station which provides fast links into the city. Twickenham town centre is also a close by and boasts a vast array of shops, bars and restaurants.

Features

- Two Double Bedrooms
- No Onward Chain
- Beautiful Riverside Grounds
- River Views
- Residents Parking
- On-site Porter

Thames Eyot, Twickenham, TW1



Total area (approx.): 81.8 sq. m (880.5 sq. ft)

Dexters

Twickenham
84 Heath Road
Twickenham
TW1 4BW
Sales
020 8744 0074

Energy Rating: D. We aim to make our particulars both accurate and reliable. However they are not guaranteed; nor do they form part of an offer or contract. If you require clarification on any points then please contact us, especially if you're traveling some distance to view. Please note that appliances and heating systems have not been tested and therefore no warranties can be given as to their good working order.

 **RICS** | Regulated
Estate Agent
and Letting Agent

[dexters.co.uk](https://www.dexters.co.uk)