



Heath Road, TW1

£499,950

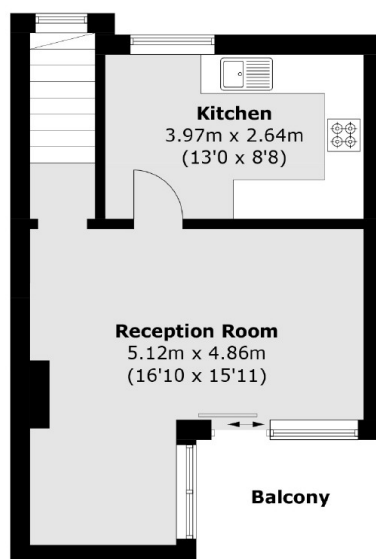
This fantastic large two double bedroom split-level apartment is situated on Twickenham high street and benefits from having a private balcony, an allocated parking space, lift access and the use of a sunny communal roof terrace.

Addison Court is situated on Heath Road right in the middle of the town centre with everything at your fingertips. There is a vast array of shops, pubs and restaurants for you to choose from and Twickenham station with its fast link to Waterloo is just a few hundred yards away.

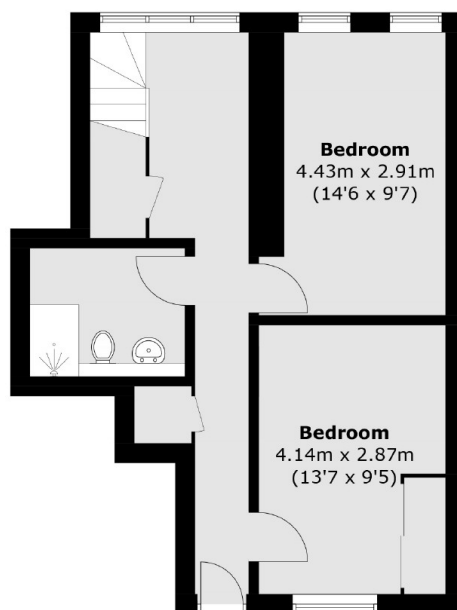
Features

- Lift Access
- Two Double Bedrooms
- Private Balcony
- Allocated Parking Space
- Communal Roof Terrace
- Split-Level Apartment Over 800sq Feet

Heath Road, Twickenham, TW1



First Floor



Ground Floor

Total area (approx.): 78.2 sq. m (841.7 sq. ft)
Balcony: 5.3 sq. m (57.0 sq. ft)