



Heath Road, TW1

£1,595 Per calendar month

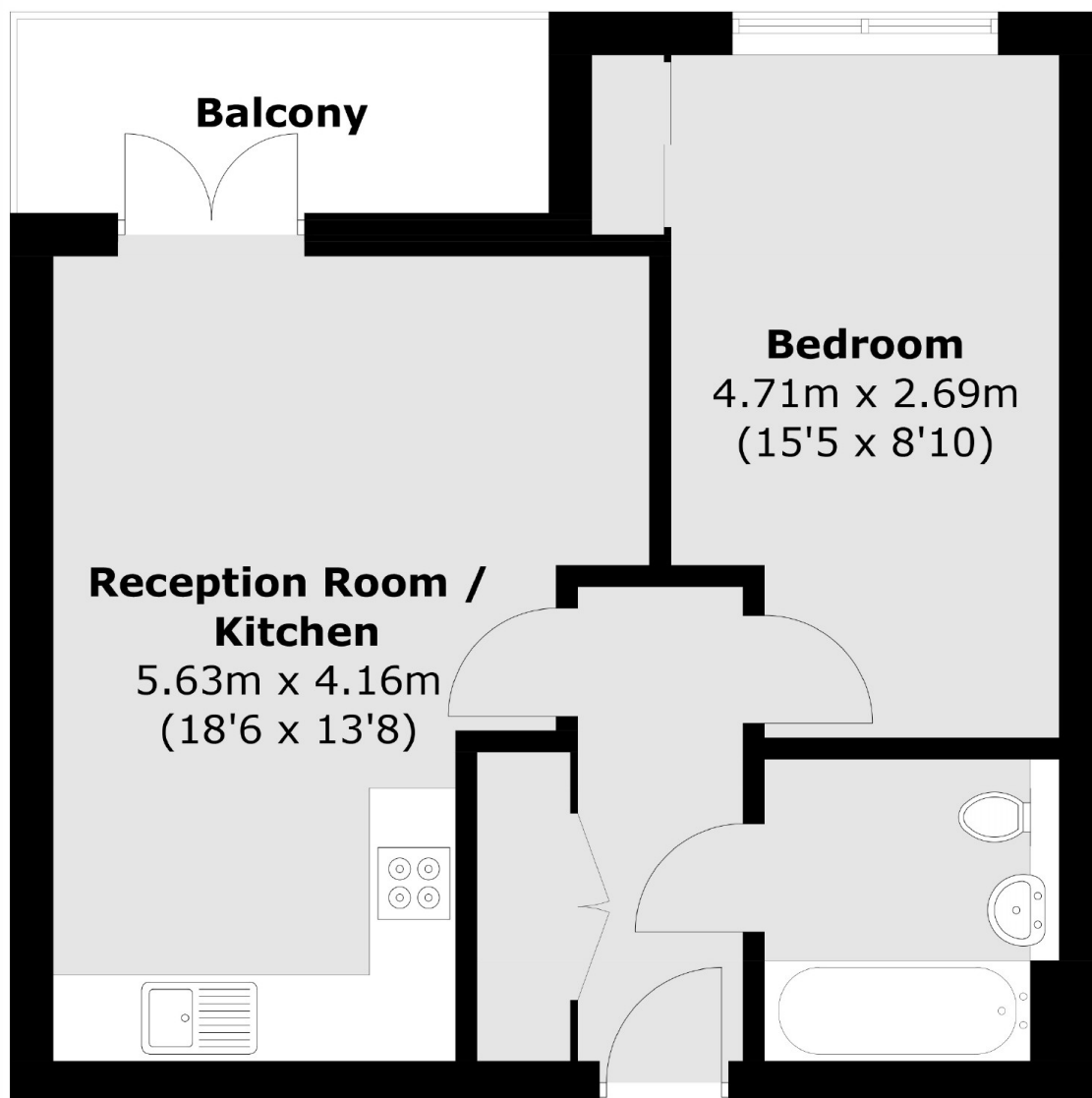
Twickenham House is a contemporary collection of new build apartments located on Twickenham high street. This luxury one bedroom apartment has been designed to provide contemporary open plan living space, spacious bedroom and stylish bathroom.

Situated in the centre of Twickenham, close to Twickenham Green and Twickenham station, this development is set in a desirable location.

Features

- One Double Bedroom
- Open Plan living/Dining
- Luxury Bathroom
- Private Parking
- Great Transport Links
- Video Entrance System

Heath Road, Twickenham, TW1



Total area (approx.): 44.1 sq. m (474.7 sq. ft)
Balcony (approx.): 5 sq. m (53.8 sq. ft)