



Hampton Road, TW2

£375,000

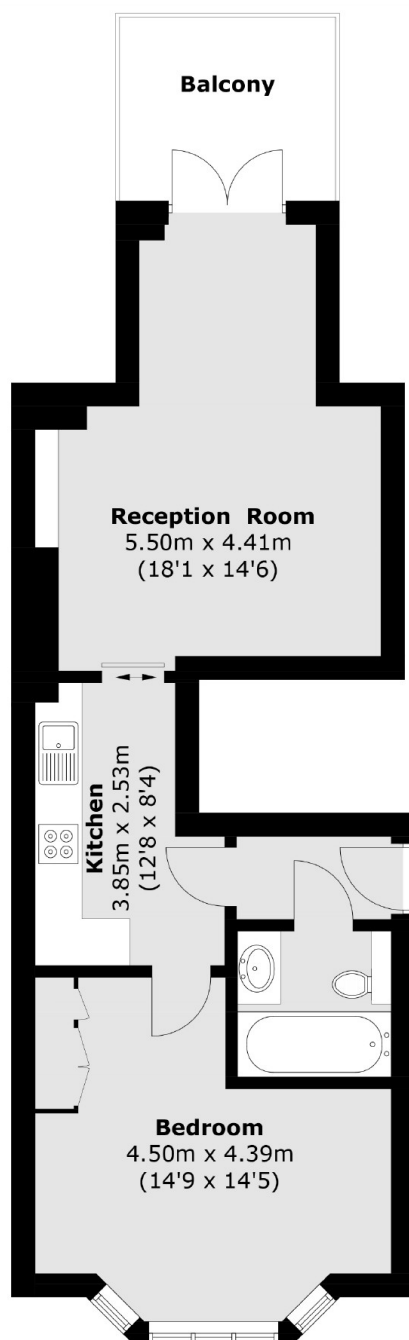
A well presented one double bedroom conversion apartment on the first floor of this beautiful period building. The accommodation comprises an entrance hallway, spacious reception room leading to a private terrace, kitchen, double bedroom and bathroom. Offered to the market with no onward chain.

Hampton Road is a popular road conveniently located next to Twickenham Green. The high street is nearby where you will find a vast array of shops, pubs and restaurants. There is easy access to both Strawberry Hill and Twickenham stations offering fast links into London Waterloo.

Features

- One Bedroom Victorian Conversion Apartment
- Spacious Reception Room
- Private Terrace
- Off-street Parking
- Close To Twickenham Green

Hampton Road, Twickenham, TW2



Total area (approx.): 50.5 sq. m (543.6 sq. ft)
Balcony: 6.5 sq. m (69.9 sq. ft)

Dexters

Twickenham
84 Heath Road
Twickenham
TW1 4BW
Sales
020 8744 0074

Energy Rating: C. We aim to make our particulars both accurate and reliable. However they are not guaranteed; nor do they form part of an offer or contract. If you require clarification on any points then please contact us, especially if you're traveling some distance to view. Please note that appliances and heating systems have not been tested and therefore no warranties can be given as to their good working order.

 **RICS** | Regulated
Estate Agent
and Letting Agent

[dexters.co.uk](https://www.dexters.co.uk)