

## Popes Grove, TW1

£1,050 Per calendar month

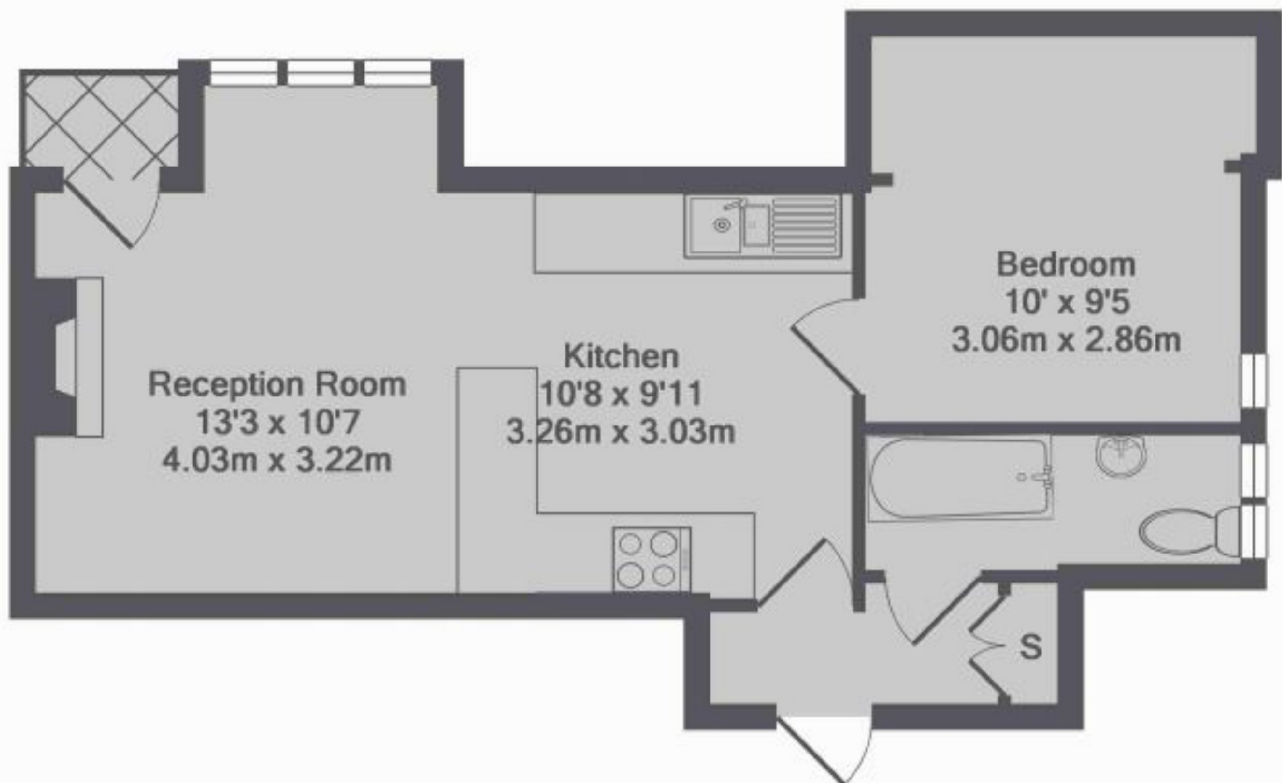
A top floor one bedroom apartment set in a central location, recently redecorated throughout and offering a modern open-plan kitchen/reception room, perfect for those who love to entertain.

Popes Grove is arguably one of Strawberry Hill's most sought after roads centrally located and close to the mainline station with it's link to Waterloo. Both the village along with Twickenham high street are also nearby with a fantastic array of shops.

### Features

- Top Floor Flat
- One Double Bedroom
- Open Plan Kitchen Area
- Redecorated Throughout
- Furnished
- Central Location

## Popes Grove, Strawberry Hill, TW1



Popes Grove, TW1  
Total Approx. Floor Area 401 Sq.Ft. (37.2 Sq.M.)

### Contact

To arrange a viewing call our office on the number below or visit our website.



Energy Rating: D. We aim to make our particulars both accurate and reliable. However they are not guaranteed; nor do they form part of an offer or contract. If you require clarification on any points then please contact us, especially if you're traveling some distance to view. Please note that appliances and heating systems have not been tested and therefore no warranties can be given as to their good working order.