



## Popes Avenue, TW2

### £1,150,000

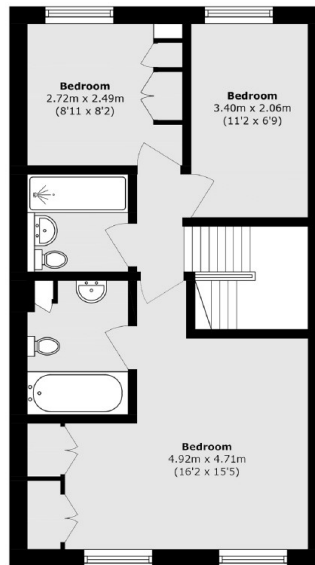
This fantastic four/five bedroom modern townhouse is located in the heart of Strawberry Hill and it benefits from having two / three receptions, two bathrooms, off street parking, a West facing private garden to the rear as well as access to an additional secure residents communal green.

Popes Avenue is a beautiful tree-lined road next to Strawberry Hill village where you will find a handful of local shops, the golf course and also the mainline station which has a direct link to London Waterloo. Teddington high street is just a few minutes away and the area is also renowned for it's excellent choice of schools.

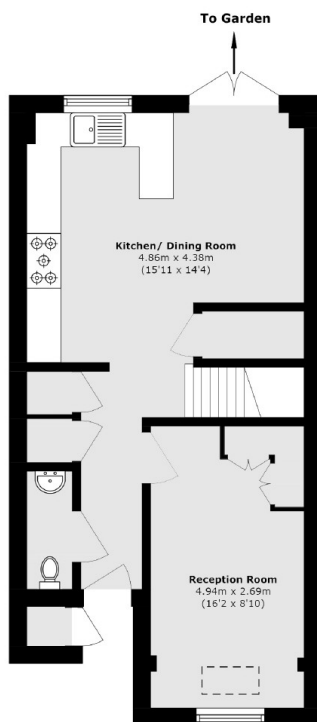
### Features

- Four Bedrooms
- Three Receptions
- Two Bathrooms
- Downstairs W.C
- Off Street Parking
- Excellent Condition

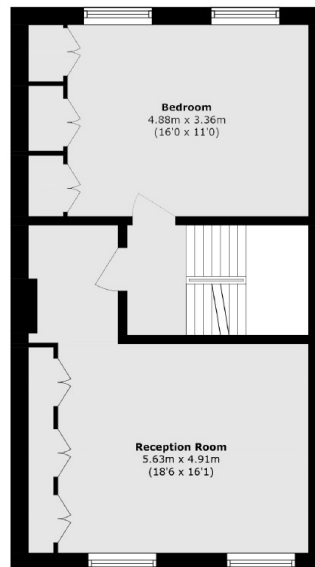
# Popes Avenue, Strawberry Hill, TW2



**Second Floor**



**Ground Floor**



**First Floor**

Total area (approx.): 136.9 sq. m (1473.5 sq. ft)

External storage area (approx.): 0.4 sq. m (4.3 sq. ft)

## Dexters

Twickenham  
84 Heath Road  
Twickenham  
TW1 4BW  
Sales  
020 8744 0074

Energy Rating: C. We aim to make our particulars both accurate and reliable. However they are not guaranteed; nor do they form part of an offer or contract. If you require clarification on any points then please contact us, especially if you're traveling some distance to view. Please note that appliances and heating systems have not been tested and therefore no warranties can be given as to their good working order.

 **RICS** | Regulated  
Estate Agent  
and Letting Agent

[dexters.co.uk](https://www.dexters.co.uk)