

## Montrose Avenue, TW2

### £1,200,000

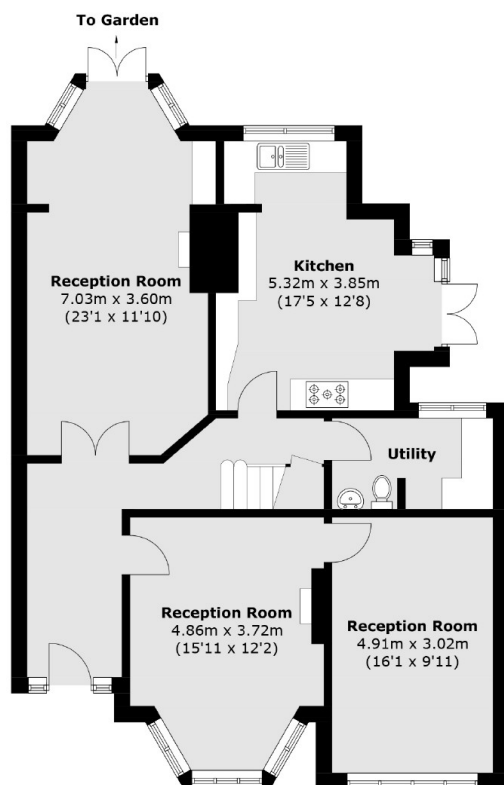
A beautiful four bedroom 1930's detached house that would make a wonderful family home. The property benefits from having two reception rooms, two bathrooms and has potential to extend. Boasting a large garden and off street parking.

Montrose Avenue is a highly sought after road close to the town centre where you will find a vast array of shops, pubs and restaurants. Whitton mainline station has a fast link to London Waterloo and is just a few hundred yards away.

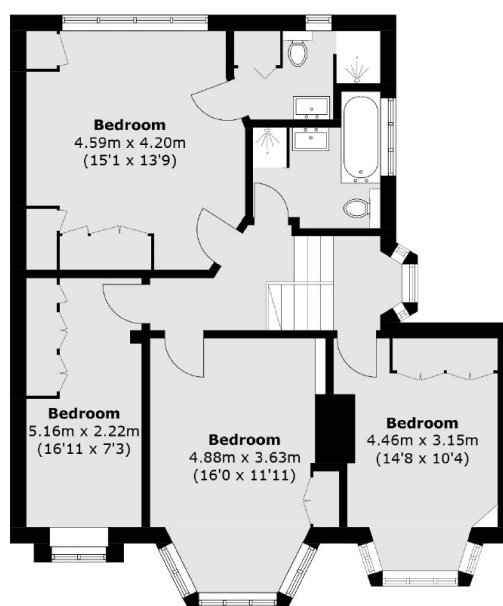
### Features

- Four Bedrooms
- Two Bathrooms
- Large Private Garden
- Off Street Parking
- Potential To Extend
- Fast Train To London Waterloo

# Montrose Avenue, Whitton, TW2



**Ground Floor**



**First Floor**

Total area (approx.): 172.4 sq. m (1,855.7 sq. ft)