



Talma Gardens, TW2

£1,250,000

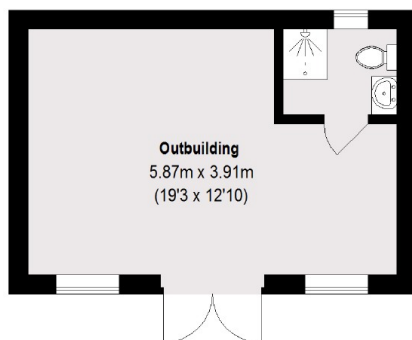
This impressive four bedroom 1930's semi-detached family home occupies over 1600sq feet of generous accommodation and it benefits from having off-street parking to the front, two bath/shower rooms and a brick built outhouse/studio at the end of a South West facing garden.

Talma Gardens is a popular residential cul-de-sac which is well positioned to enjoy both Twickenham and Whitton town centres. There are great transport links close by including a fast train into London Waterloo as well as excellent schools nearby such as Chase Bridge Primary.

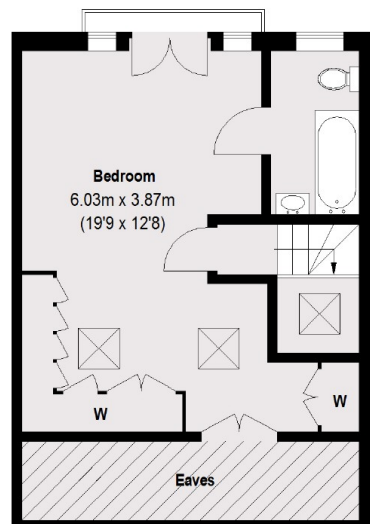
Features

- Four Bedrooms
- Off-Street Parking
- Brick Built Studio/Annexe
- Downstairs WC
- Excellent Condition
- South West Facing Garden

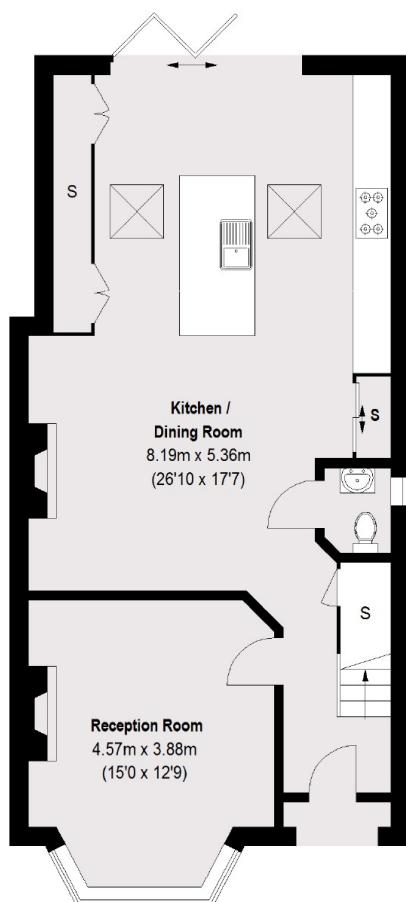
Talma Gardens, Twickenham, TW2



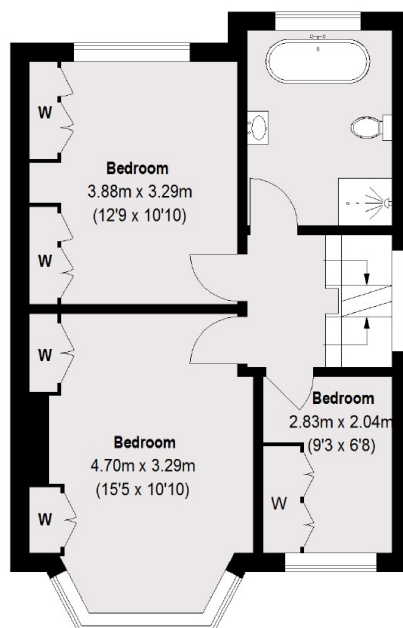
Outbuilding
(Not Shown In Actual
Location / Orientation)



Second Floor



Ground Floor



First Floor

Total area (approx.) (Excluding Eaves) : 150.66 sq. m (1622 sq. ft)
Outbuilding: 23.14 sq. m (249 sq. ft)

Dexters

Twickenham
84 Heath Road
Twickenham
TW1 4BW

Sales
020 8744 0074

Energy Rating: E. We aim to make our particulars both accurate and reliable. However they are not guaranteed; nor do they form part of an offer or contract. If you require clarification on any points then please contact us, especially if you're traveling some distance to view. Please note that appliances and heating systems have not been tested and therefore no warranties can be given as to their good working order.

RICS Regulated
Estate Agent
and Letting Agent

dexters.co.uk