



Strawberry Vale, TW1

£1,595,000

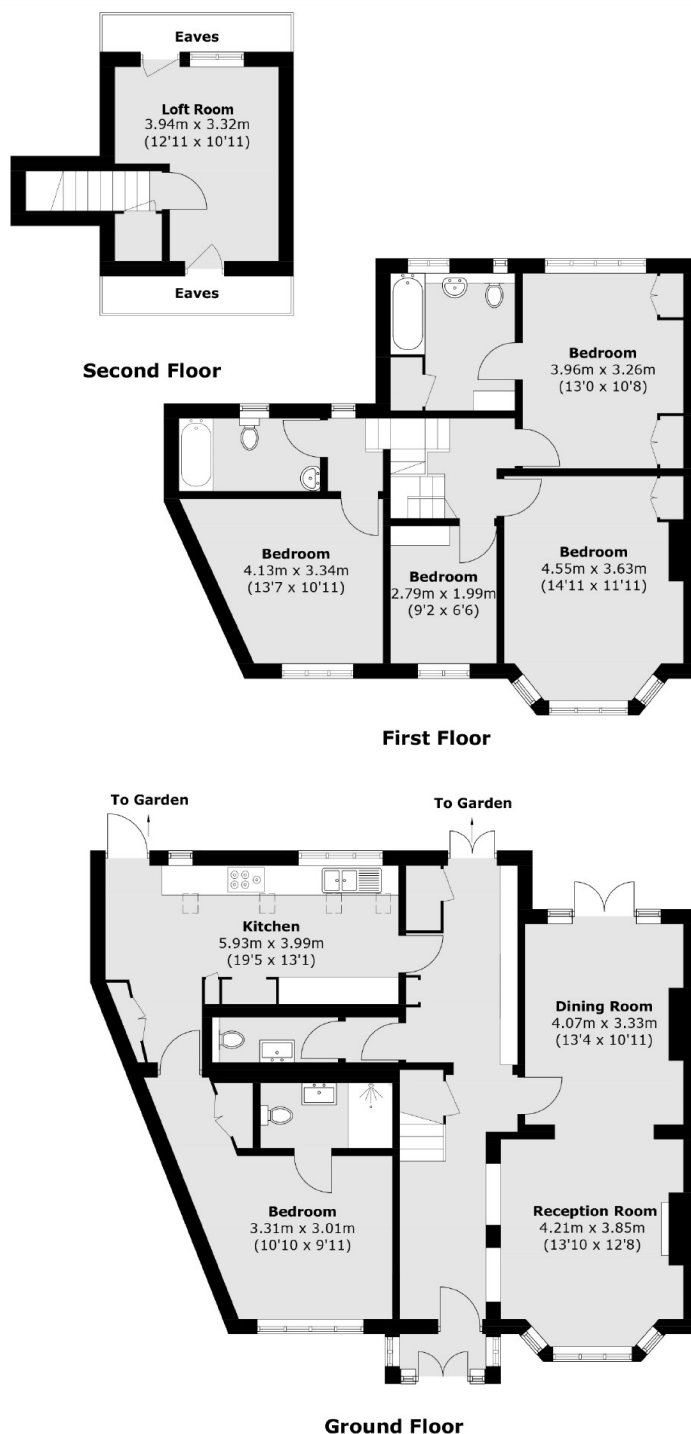
This beautiful five bedroom 1930's semi detached house has everything the modern family would want. Occupying almost 2000sq feet of generous accommodation the house benefits from having three bath / shower rooms, a downstairs W.C, off street parking to the front and wonderful mature garden to the rear.

Strawberry Vale runs adjacent to the River Thames and is close to Teddington and Twickenham town centres, which offer a vast array of shops, bars, restaurants and independent boutiques. Strawberry Hill and Twickenham mainline stations are just half a mile away and provide routes to and from the city.

Features

- Five Bedrooms
- Three Bath / Shower Rooms
- Off Street Parking
- Large Mature Garden
- Excellent Condition
- Downstairs W.C

Strawberry Vale, Strawberry Hill, TW1



Total area (approx.): 180.1 sq. m (1,938.6 sq. ft)
(Excluding Eaves)

Dexters

Twickenham
84 Heath Road
Twickenham
TW1 4BW
Sales
020 8744 0074

Energy Rating: D. We aim to make our particulars both accurate and reliable. However they are not guaranteed; nor do they form part of an offer or contract. If you require clarification on any points then please contact us, especially if you're traveling some distance to view. Please note that appliances and heating systems have not been tested and therefore no warranties can be given as to their good working order.

RICS Regulated
Estate Agent
and Letting Agent

dexters.co.uk