

Richmond Road, TW1

£350,000

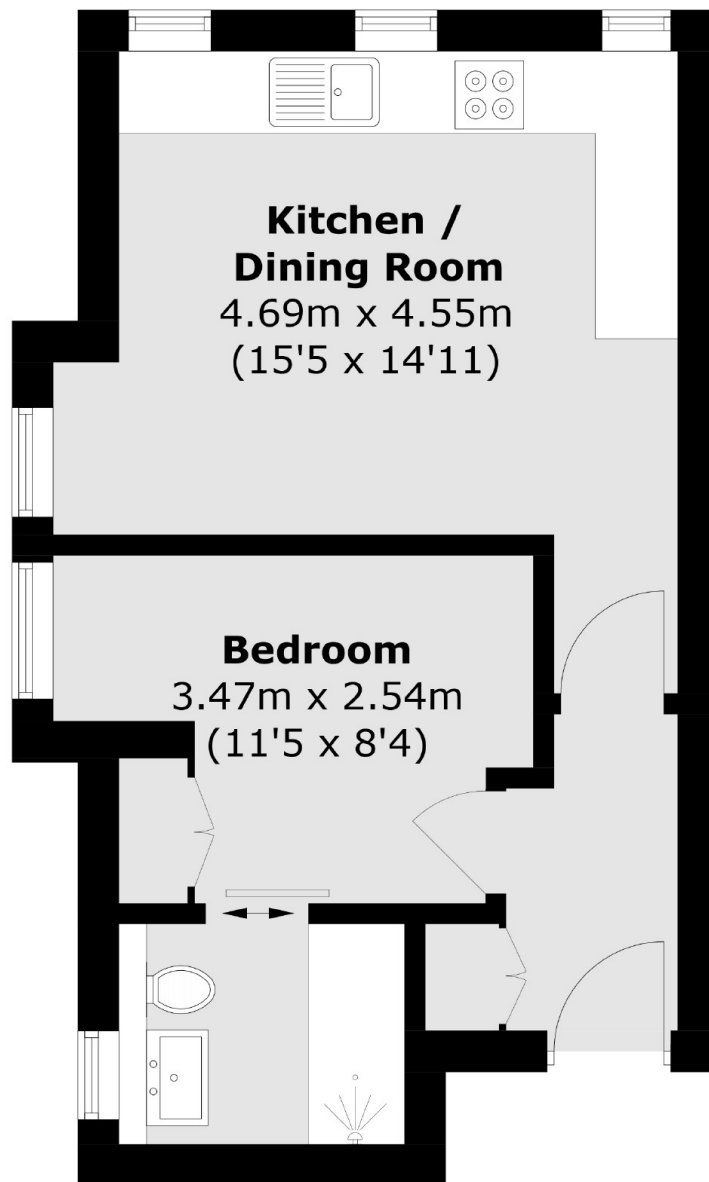
Offered with no onward chain is this stunning one double bedroom period conversion apartment that has been completely renovated to an exceptional standard and it also benefits from having a new lease on completion of the sale.

Richmond road is regarded as one of the best locations in the area with St Margarets village, York House gardens, the river Thames and Marble hill park all moments away. Twickenham train station with it's fast trains to London Waterloo is also nearby.

Features

- One Double Bedroom
- No Onward Chain
- New Lease On Completion
- Central Location
- Completely Refurbished
- Open Plan Kitchen / Reception

Richmond Road, Twickenham, TW1



Total area (approx.): 32.2 sq. m (346.5 sq. ft)

Dexters

Twickenham
84 Heath Road
Twickenham
TW1 4BW
Sales
020 8744 0074

Energy Rating: Tbc. We aim to make our particulars both accurate and reliable. However they are not guaranteed; nor do they form part of an offer or contract. If you require clarification on any points then please contact us, especially if you're traveling some distance to view. Please note that appliances and heating systems have not been tested and therefore no warranties can be given as to their good working order.

 **RICS** | Regulated
Estate Agent
and Letting Agent

dexters.co.uk