



## Whitton Road, TW2

### £850,000

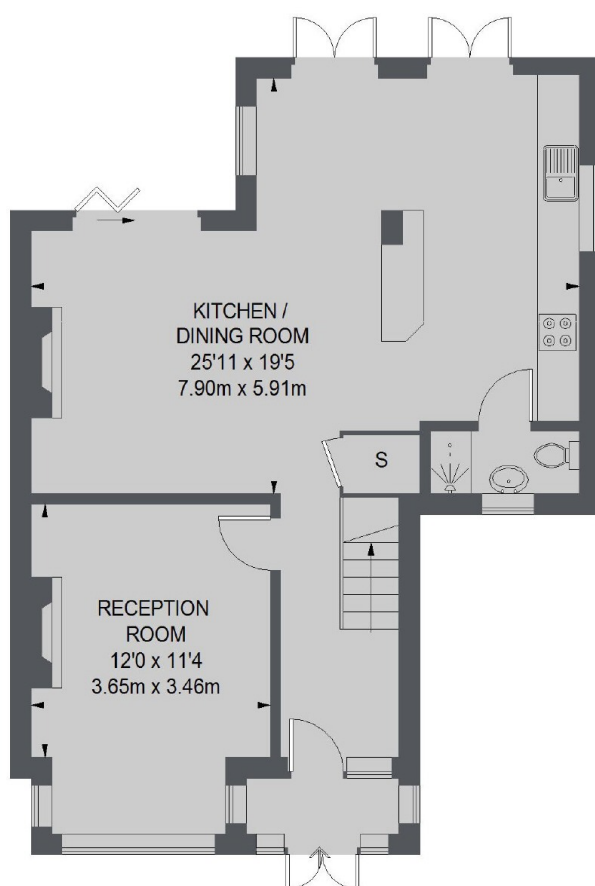
This large four bedroom, three bathroom 1930's semi-detached family home has been completely renovated by the current owners and has the added benefit of having off-street parking and a South facing garden.

Whitton Road is located less than a mile from Twickenham mainline station with its fast links to London Waterloo and also the town centre where you will find a vast array of shops, bars and restaurants.

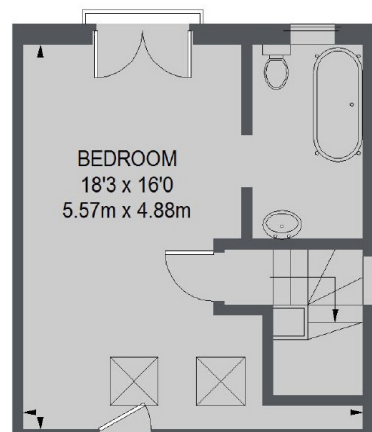
### Features

- Four Bedrooms
- Three Bath/Shower Rooms
- Off-Street Parking
- Completely Refurbished
- South Facing Garden
- Side Access

# Whitton Road, Twickenham, TW2

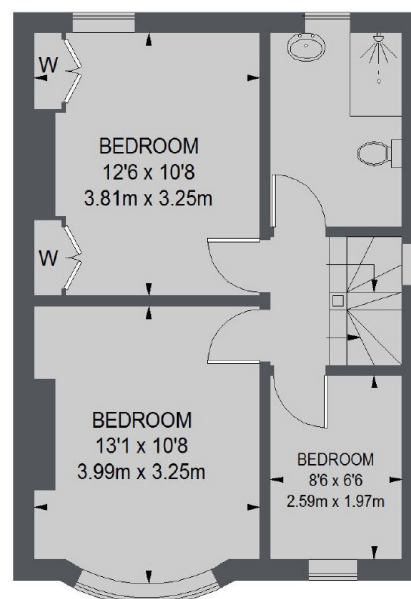


GROUND FLOOR



EAVES

SECOND FLOOR



FIRST FLOOR

TOTAL APPROX. FLOOR AREA  
(EXCLUDING EAVES)  
1457 SQ. FT. (135.35 SQ. M.)

## Dexters

Twickenham  
84 Heath Road  
Twickenham  
TW1 4BW  
Sales  
020 8744 0074

Energy Rating: D. We aim to make our particulars both accurate and reliable. However they are not guaranteed; nor do they form part of an offer or contract. If you require clarification on any points then please contact us, especially if you're traveling some distance to view. Please note that appliances and heating systems have not been tested and therefore no warranties can be given as to their good working order.

 **RICS** | Regulated  
Estate Agent  
and Letting Agent

dexters.co.uk