



## Queensbridge Park, TW7

### £500,000

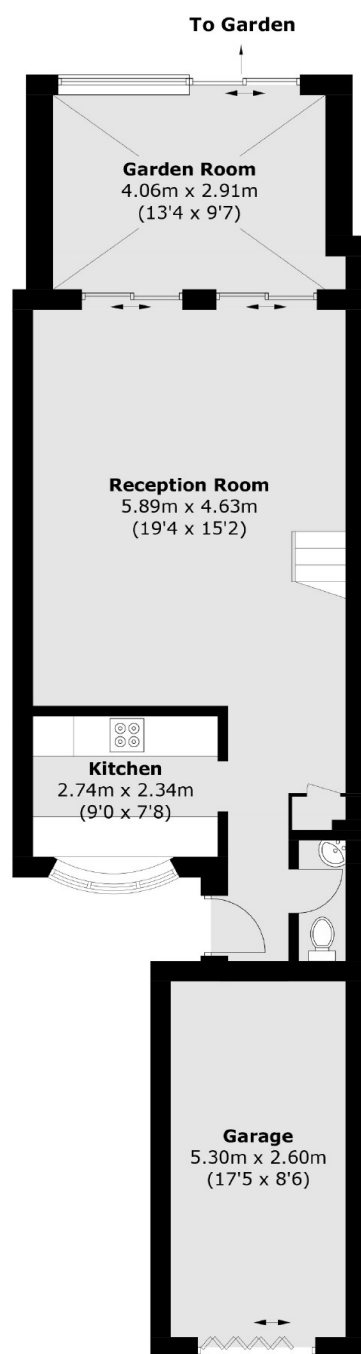
Offers over £500,000. Offered with no onward chain is this three bedroom mid terrace family home that benefits from having off street parking to the front, a garage, a downstairs W.C and a sunny private garden with rear access.

Queensbridge Park is conveniently located for easy access to Twickenham, Whitton and Isleworth Town Centres where you will find a vast array of shops, pubs and restaurants. There is also a fast train to London Waterloo from both Whitton & Twickenham mainline station.

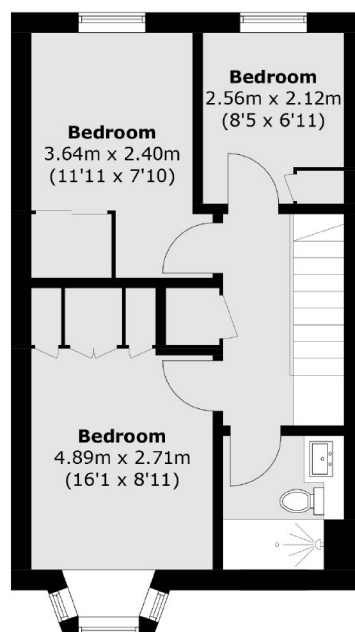
### Features

- Three Bedrooms
- No Onward Chain
- Off Street Parking
- Garage
- Rear Access
- Downstairs W.C

# Queensbridge Park, Whitton, TW7



**Ground Floor**



**First Floor**

Total area (approx.): 92.6 sq. m (996.7 sq. ft)  
Garage (approx.): 14.0 sq. m (150.7 sq. ft)

## Dexters

Twickenham  
84 Heath Road  
Twickenham  
TW1 4BW  
Sales  
020 8744 0074

Energy Rating: C. We aim to make our particulars both accurate and reliable. However they are not guaranteed; nor do they form part of an offer or contract. If you require clarification on any points then please contact us, especially if you're traveling some distance to view. Please note that appliances and heating systems have not been tested and therefore no warranties can be given as to their good working order.

**RICS** Regulated  
Estate Agent  
and Letting Agent

dexters.co.uk