



Constance Road, TW2

£999,950

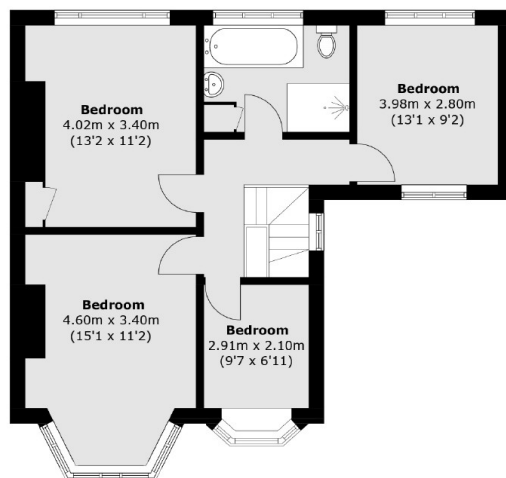
This spacious four bedroom 1930s semi detached house presents a fantastic opportunity for families seeking both character and modern living. The property comprises a bright and airy lounge, a separate dining room and a well-appointed kitchen. One of the many benefits include the expansive garden, with a south facing aspect, providing a great space for gardening or hosting family gatherings.

Constance Road is situated just off Whitton high street where you will find a vast array of shops, pubs, and cafés including independent coffee shops and bakeries as well as Starbucks. The area is also ideal for commuters as there is a fast link to London Waterloo via the mainline station and there are also a number of good schools nearby.

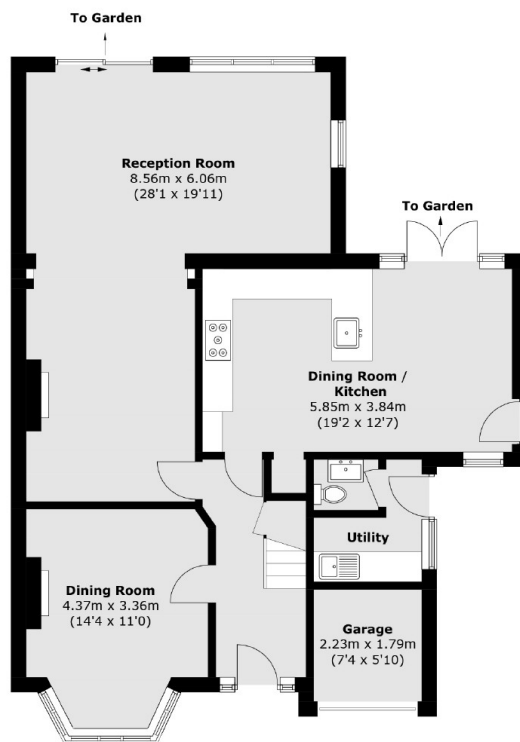
Features

- Four Bedrooms
- Large Sunny Garden
- Off Street Parking
- Excellent Condition
- Downstairs W.C
- Potential To Extend

Constance Road, Whitton, TW2



First Floor



Ground Floor

Approx Internal Area: 150.1 sq. m (1,615.7 sq. ft)
Garage: 4.7 sq. m (50.6 sq. ft)