



## Mill Farm Crescent, TW4

£650,000

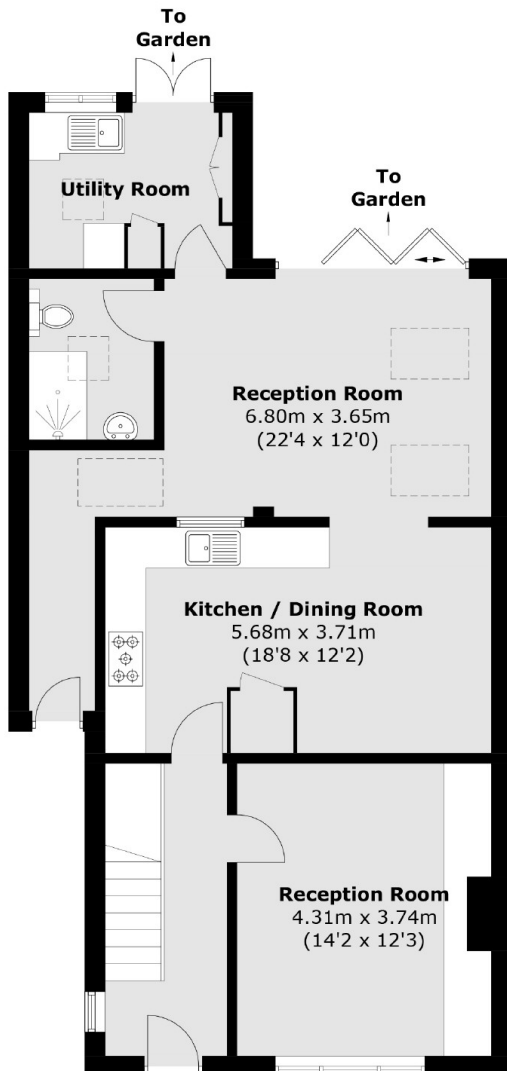
Offered with no onward chain this modern three/four bedroom family home benefits from a generous open plan kitchen/dining area which leads into a spacious family room. There is a further reception room, garden annex with en-suite shower as well as off street parking to the front.

Mill Farm Crescent is a quiet residential area located close to the amenities in Feltham and Whitton, it is also within easy reach of the lush open green space in Crane Park.

### Features

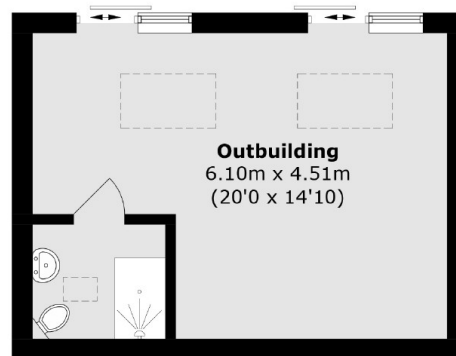
Spacious Three/Four Bedroom  
Family Home  
Modern Open Plan Kitchen/  
Dining  
Annex With En-Suite Shower  
Off Street Parking  
No Onward Chain  
Fast Train From Whitton To  
Waterloo

# Mill Farm Crescent, Whitton, TW4

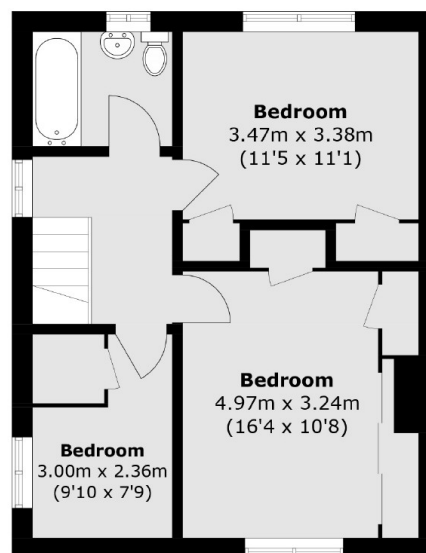


## Ground Floor

Approx Internal Area: 122.7 sq. m (1,320.7 sq. ft)  
Outbuilding: 27.8 sq. m (299.2 sq. ft)



(Not Shown In Actual  
Location / Orientation)



## First Floor

# Dexters

Twickenham  
84 Heath Road  
Twickenham  
TW14BW  
Sales  
020 8744 0074

Energy Rating: C. We aim to make our particulars both accurate and reliable. However they are not guaranteed; nor do they form part of an offer or contract. If you require clarification on any points then please contact us, especially if you're traveling some distance to view. Please note that appliances and heating systems have not been tested and therefore no warranties can be given as to their good working order.

 **RICS** | Regulated  
Estate Agent  
and Letting Agent

dexters.co.uk