



Nelson Road, TW2

£650,000

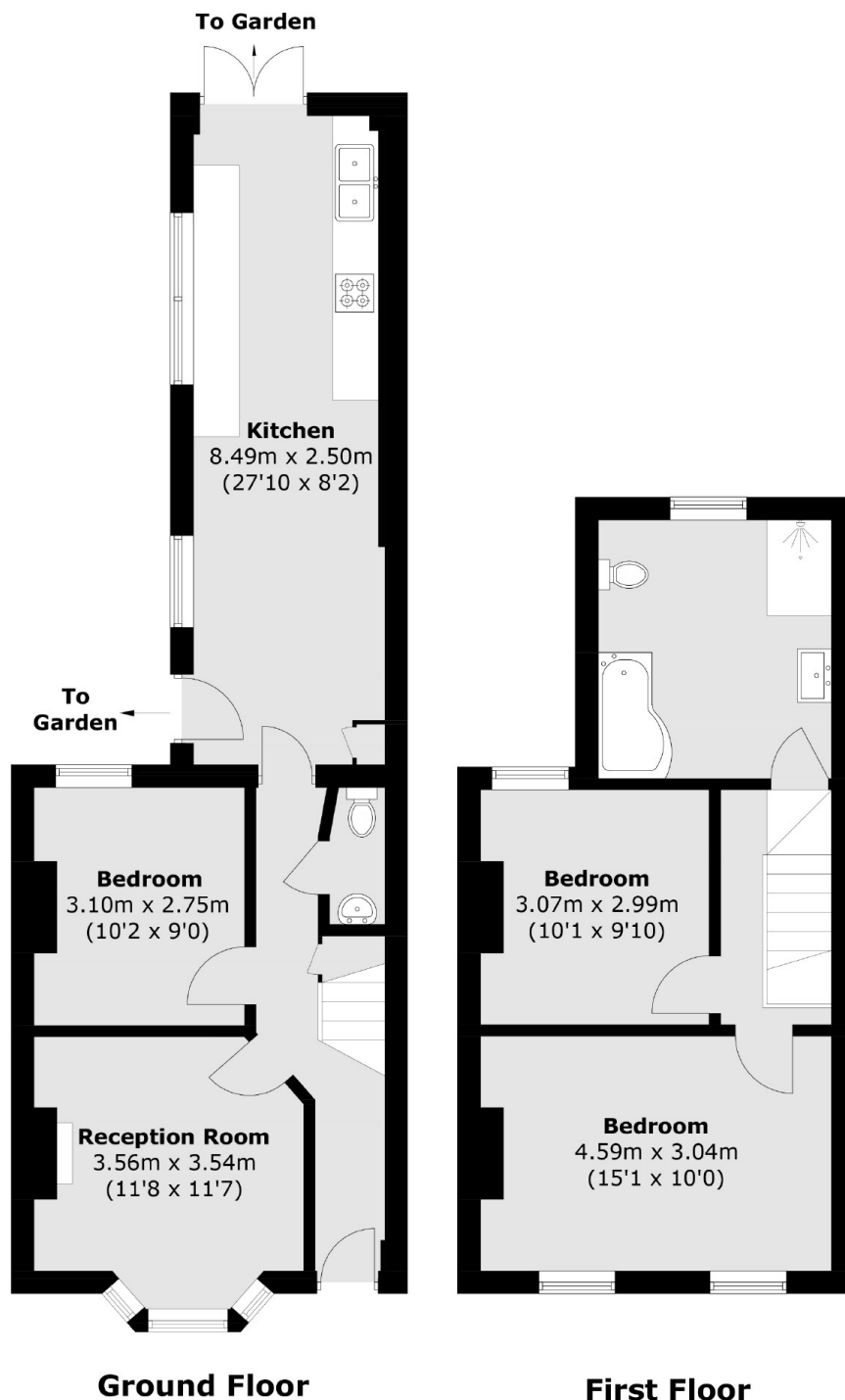
This fantastic Victorian house has everything the modern family could want and more. It benefits from having two double bedrooms, two receptions, a modern kitchen/dining room, a downstairs W.C and potential to extend the rear and loft to get more bedrooms if required.

Nelson Road is situated off Whitton high street where you will find a vast array of shops, pubs and cafés including Starbucks. There is a fast link to London Waterloo and there are also a number of good schools nearby such as Turing House and the soon to be built Radnor House at Kneller Hall.

Features

- Two Double Bedrooms
- Two Receptions
- Excellent Condition
- Central Location
- Downstairs W.C
- Potential To Extend The Loft & Rear

Nelson Road, Whitton, TW2



Total area (approx.): 91.7 sq. m (987 sq. ft)

Dexters

Twickenham
84 Heath Road
Twickenham
TW1 4BW

Sales
020 8744 0074

Energy Rating: D. We aim to make our particulars both accurate and reliable. However they are not guaranteed; nor do they form part of an offer or contract. If you require clarification on any points then please contact us, especially if you're traveling some distance to view. Please note that appliances and heating systems have not been tested and therefore no warranties can be given as to their good working order.

 **RICS** | Regulated
Estate Agent
and Letting Agent

[dexters.co.uk](https://www.dexters.co.uk)