



Mallard Place, TW1  
£1,275,000

Waterview



Overlooking the river Thames is this stunning three bedroom mid terrace townhouse that benefits from having two bath/shower rooms, off street parking, an integral garage and access to a residents swimming pool along with riverside grounds.

Mallard Place is an award winning Span development on the river Thames off Strawberry Vale between Twickenham and Teddington town centres and is close to Strawberry Hill mainline station. There are also a number of excellent schools nearby.





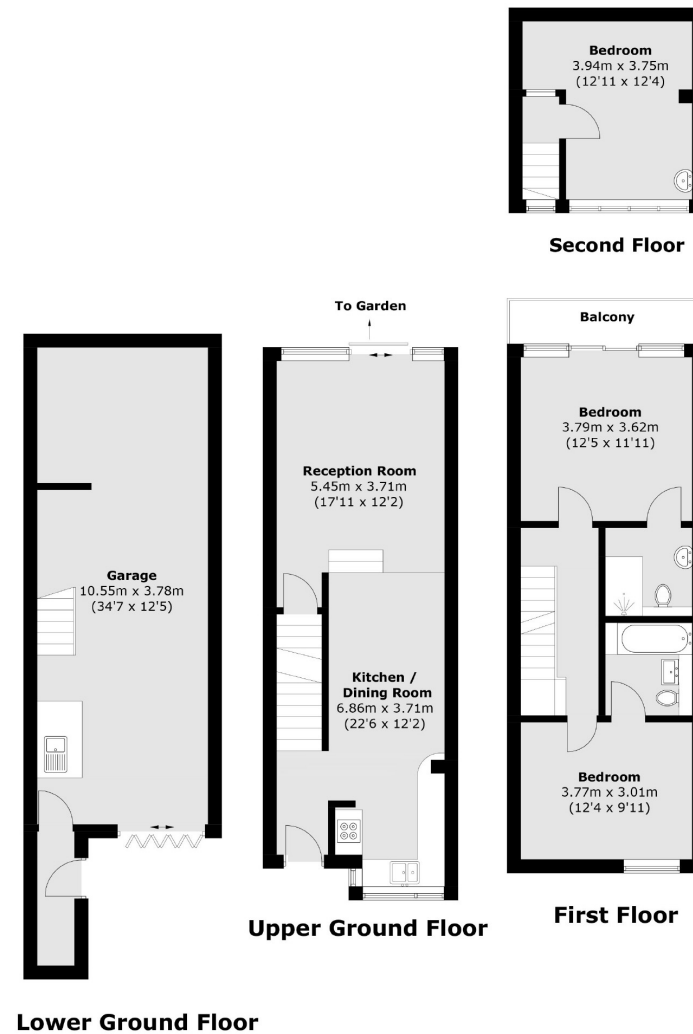
### Features

Three Bedrooms  
Off Street Parking  
Two Bath/Shower  
Rooms  
Integral Garage  
Residents Swimming  
Pool  
Riverside  
Development





# Mallard Place, Strawberry Hill, TW1



Total area (approx.): 142.1 sq. m (1,529.6 sq. ft)  
Balcony: 4.1 sq. m (44.1 sq. ft)

## Contact

To arrange a viewing call our office on the number below or visit our website.



Energy Rating: D. We aim to make our particulars both accurate and reliable. However they are not guaranteed; nor do they form part of an offer or contract. If you require clarification on any points then please contact us, especially if you're traveling some distance to view. Please note that appliances and heating systems have not been tested and therefore no warranties can be given as to their good working order.



