



Queens Road, TW1

£375,000

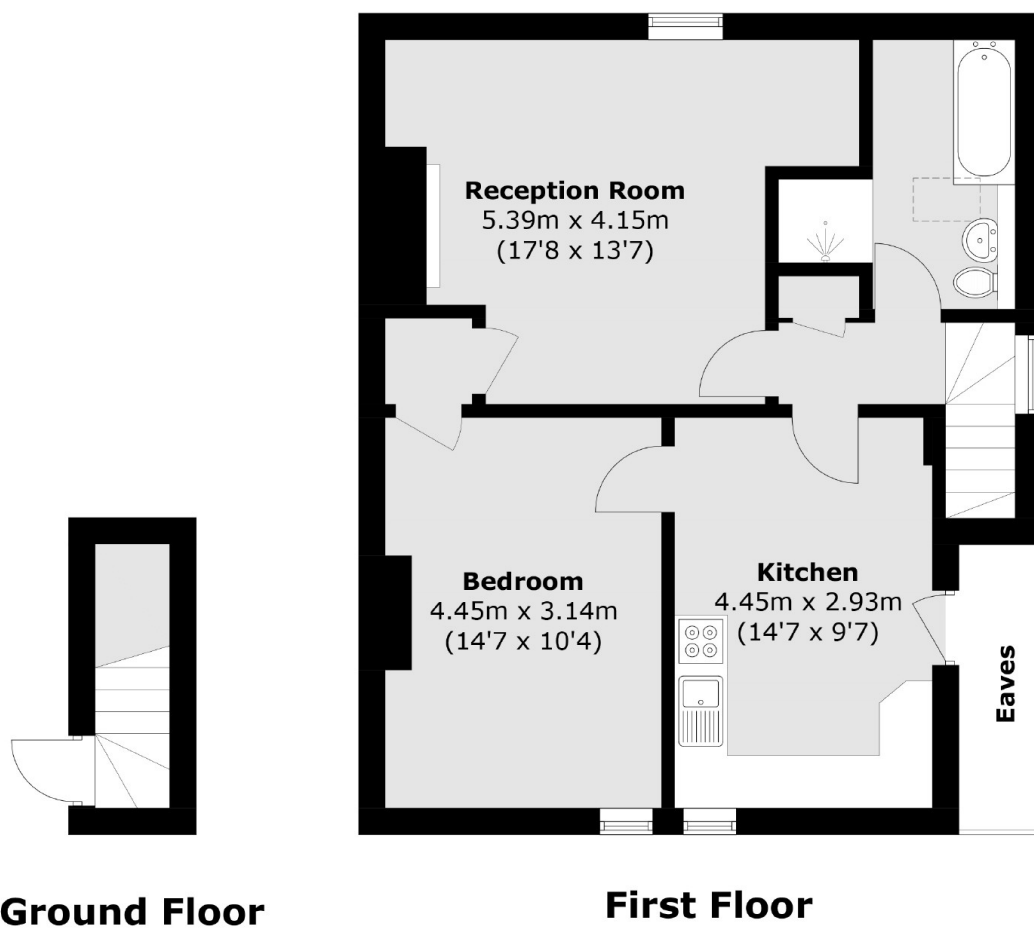
Offered with no onward chain and situated in the heart of Twickenham, this modern one bedroom Victorian conversion flat is ideal for commuters. Occupying the top floor, there is a large eat in kitchen, a bright reception room, large double bedroom and bathroom.

Queens Road is centrally located for access onto Twickenham high street where you will find a vast array of shops, pubs and restaurants. The mainline station with fast links to Waterloo is only a few hundred yards away. The river Thames and the famous Eel Pie Island are also within a short walk.

Features

- One Large Double Bedroom
- Separate Kitchen
- Spacious Living Room
- Top Floor Period Conversion
- No Onward Chain
- Central Location

Queens Road, Twickenham, TW1



Total area (approx.): 62.4 sq. m (671.7 sq. ft)
(Excluding Eaves)