



## Holly Road, TW1

### £625,000

Offered with no onward chain is this beautiful two double bedroom Victorian house located in the heart of Twickenham. The property benefits from having a modern kitchen, a stylish open plan reception and a sunny private rear garden.

Holly Road is tucked away yet just a stones throw away from Twickenham High Street with it's array of shops and restaurants. There is easy access to the River Thames and Marble Hill Gardens for walks. Commuters can enjoy Twickenham station with its fast links to London Waterloo, great bus routes and easy access to the M3/ M25 and Heathrow Airport.

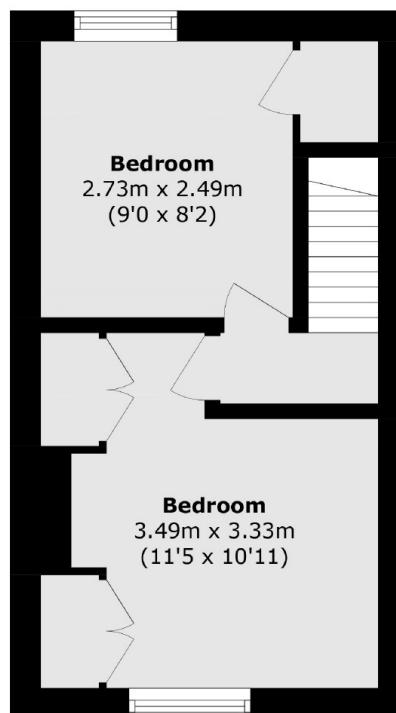
### Features

- Two Double Bedrooms
- Excellent Condition
- Front & Rear Gardens
- Central Location
- Victorian
- No Onward Chain

# Holly Road, Twickenham, TW1



**Ground Floor**



**First Floor**

Total area (approx.): 55.6 sq. m (598.4 sq. ft)