



Manor Road, TW2

£300,000

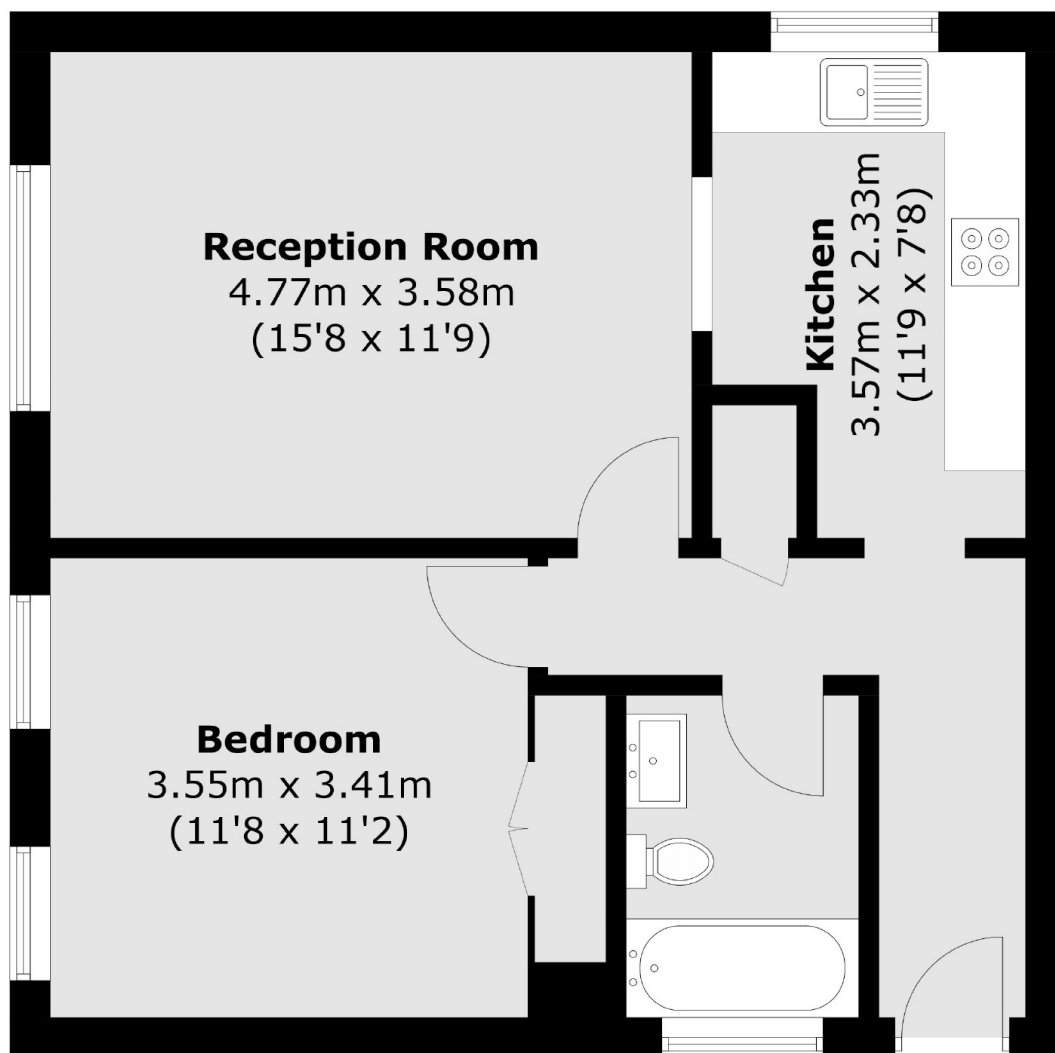
Offers Over £300,000. This impressive one double bedroom first floor apartment is situated down a popular road and would be a perfect first time purchase or investment. The property benefits from having residents parking, access to communal gardens and a long lease of 165 years.

Selby Court is on Manor Road which is close to excellent schools such as Waldegrave Girls and Trafalgar. Twickenham Green and the high street is also less than a mile away which offers a wide variety of shops, pubs and restaurants.

Features

- One Double Bedroom
- Excellent Condition
- Residents Parking
- Communal Gardens
- Popular Road
- Long Lease Of 165 Years

Manor Road, Twickenham, TW2



Total area (approx.): 52.2 sq. m (561.9 sq. ft)

Dexters

Twickenham
84 Heath Road
Twickenham
TW1 4BW
Sales
020 8744 0074

Energy Rating: C. We aim to make our particulars both accurate and reliable. However they are not guaranteed; nor do they form part of an offer or contract. If you require clarification on any points then please contact us, especially if you're traveling some distance to view. Please note that appliances and heating systems have not been tested and therefore no warranties can be given as to their good working order.

 **RICS** | Regulated
Estate Agent
and Letting Agent

[dexters.co.uk](https://www.dexters.co.uk)