



Heath Gardens, TW1

£1,250,000

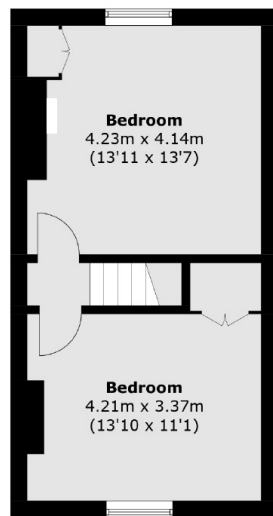
Offered with no onward chain is this impressive four double bedroom semi-detached Victorian family home that benefits from having two bathrooms, a downstairs W.C, a lovely private garden with rear access and a double garage.

Heath Gardens is just off the high street providing easy access to the array of local shops, cafés and restaurants and a number of excellent schools nearby. Twickenham mainline station with its fast and frequent routes to and from London Waterloo is less than a mile away.

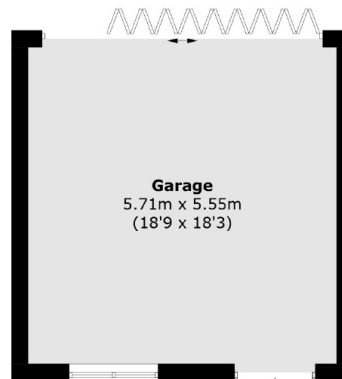
Features

- Four Double Bedroom Home
- Semi-Detached
- Two Bathrooms
- Large Garage At The Rear
- No Onward Chain
- Fantastic Central Location

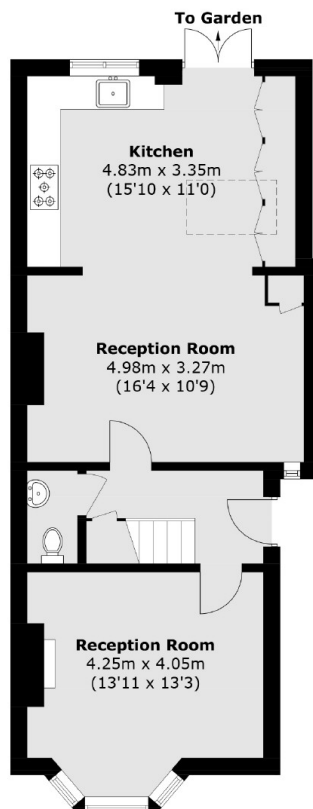
Heath Gardens, Twickenham, TW1



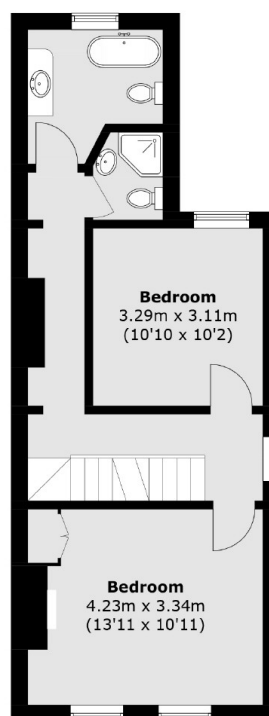
Second Floor



(Not Shown In Actual
Location / Orientation)



Ground Floor



First Floor

Total area (approx.): 139.4 sq. m (1,500.5 sq. ft)
Garage: 32.7 sq. m (352.0 sq. ft)