



Andover Road, TW2

£669,950

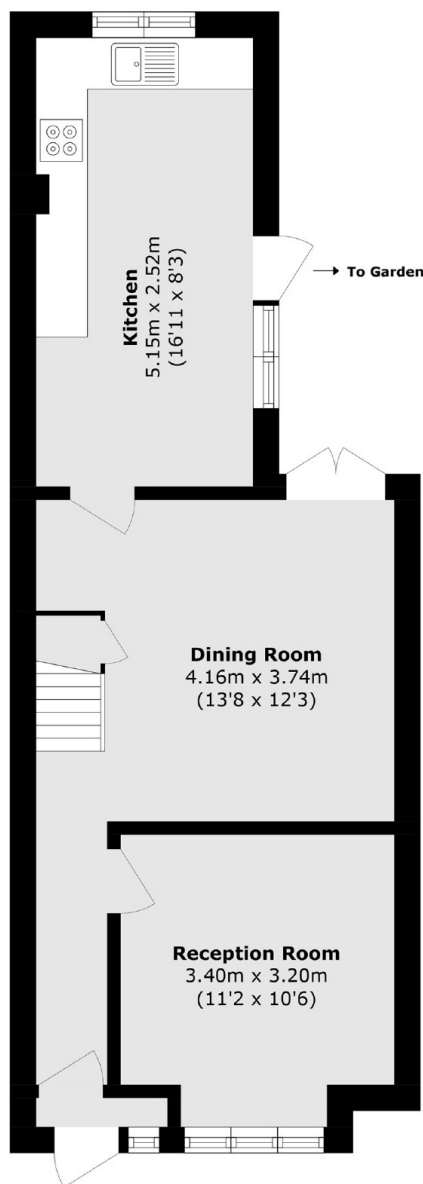
Offered with no onward chain is this spacious two double bedroom house presented in excellent condition throughout. Further benefits include the potential to extend into the loft and a sunny West facing garden with rear access.

Andover Road is an extremely desirable road, just a quarter of a mile from the town centre and within easy reach of Twickenham Green and Twickenham mainline station where you can get a fast link to London Waterloo. The area is also within Waldegrave Girls secondary catchment and other great primary schools.

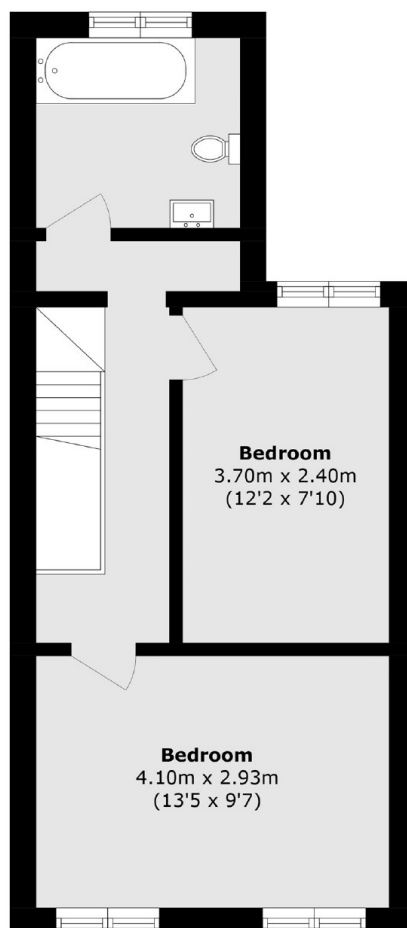
Features

- Two Double Bedrooms
- No Onward Chain
- Good Condition
- West Facing Garden
- Potential To Extend Into The Loft
- Rear Access

Andover Road, Twickenham, TW2



Ground Floor



First Floor

Total area (approx.): 79.5 sq. m (855.7 sq. ft)