



Michelham Gardens, TW1

£1,200,000

This beautiful four bedroom 1930's family home is nestled in the corner of a highly sought after road and offers spacious accommodation across three floors. The property has been loft and rear extended and benefits from having off-street parking to the front and a landscaped rear garden.

Michelham Gardens is one of Strawberry Hill's hidden gems and can be accessed off Strawberry Vale. The road is within close proximity of the River Thames and Twickenham and Teddington town centres, where there are a vast array of shops, pubs and restaurants.

Features

- Four Bedrooms
- Two Bathrooms
- Kitchen/Living Room
- Downstairs WC
- Off-Street Parking
- No Onward Chain



Michelham Gardens, TW1

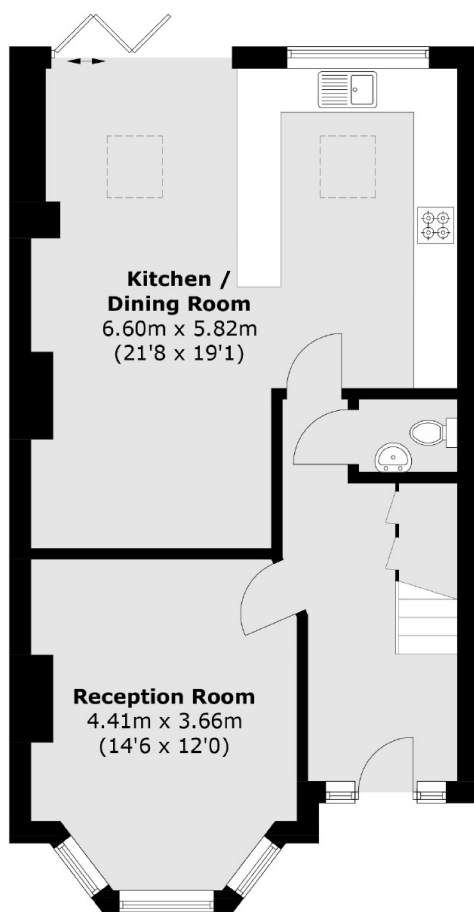
This home is in an excellent corner of the road, making it feel more spacious both in and outside. The ground floor consists of a bay fronted reception room, a WC and a wonderful open plan kitchen/ living room with doors leading out to the garden.

On the first floor there are three bedrooms and a modern four piece bathroom. The top floor has been converted to provide another large bedroom and en suite shower room.

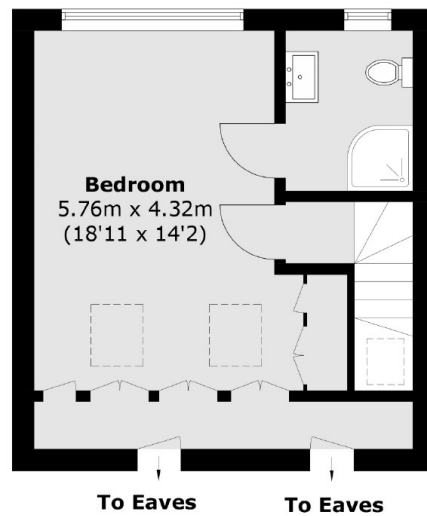
Outside there is off-street parking to the front of the property for two sizeable cars alongside a secluded back garden backing St Marys running track. Further potential to extend more to the rear should that be desired.



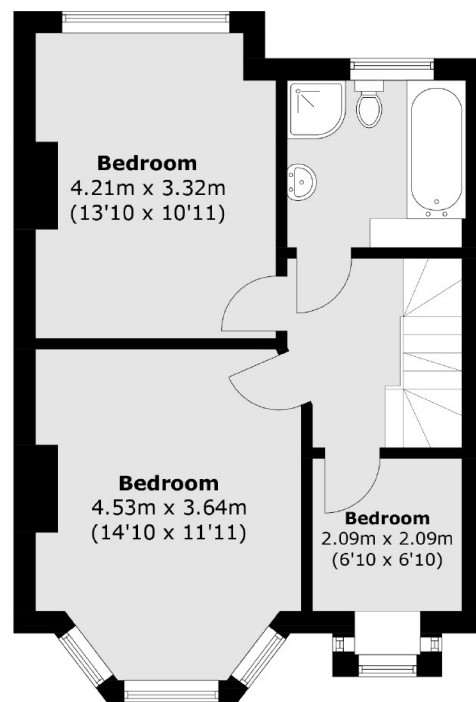
Michelham Gardens, Twickenham, TW1



Ground Floor



Second Floor



First Floor

Total area (approx.): 138.6 sq. m (1,491.9 sq. ft)