



Hospital Bridge Road, TW2

£699,950

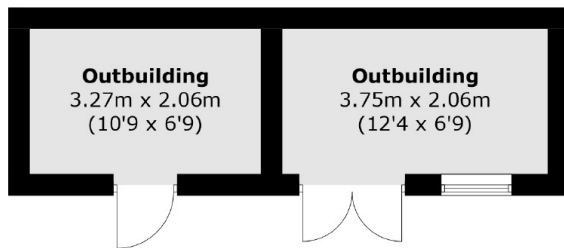
Offers Over £699,950. This spacious four/five bedroom semi-detached family home offers flexible accommodation, providing comfortable living space for families of all sizes. The property features a large reception, a good-sized kitchen and bathrooms on every floor. Outside the property boasts a generous private garden complete with an outbuilding that would make an ideal home office.

Hospital Bridge Road leads from Twickenham through to Whitton and is close to the high street where you will find a vast array of shops and café's. The fast link to Waterloo from the mainline station is just 0.5 miles away as well having a number of excellent schools on your doorstep.

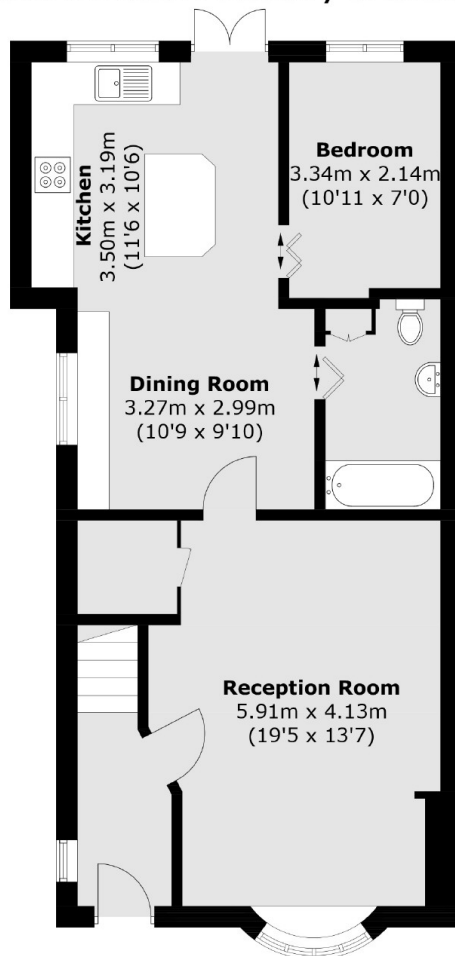
Features

- Four/Five Bedrooms
- Semi-Detached Home
- Off Street Parking
- Three Bathrooms
- Large Private Garden
- Garden Room

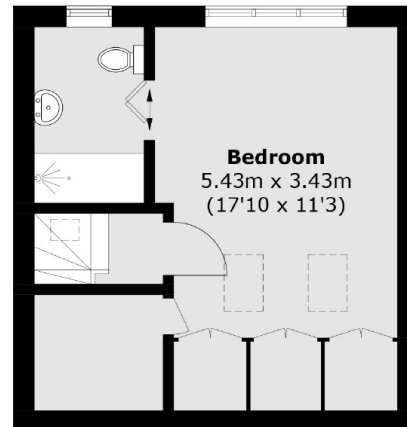
Hospital Bridge Road, Whitton, TW2



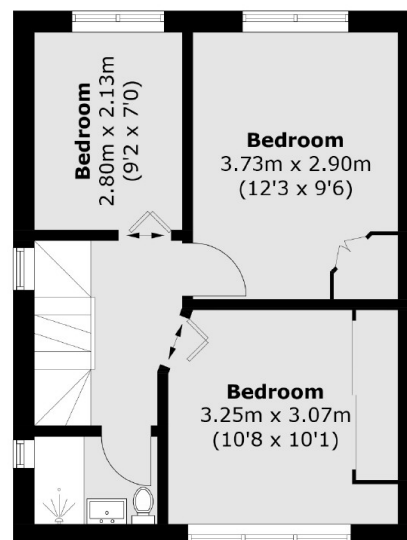
(Not Shown In Actual Location / Orientation)



Ground Floor



Second Floor



First Floor

Total area (approx.): 127.2 sq. m (1,369.1 sq. ft)
Outbuildings area (approx.): 14.8 sq. m (159.3 sq. ft)

Dexters

Twickenham
84 Heath Road
Twickenham
TW1 4BW
Sales
020 8744 0074

Energy Rating: C. We aim to make our particulars both accurate and reliable. However they are not guaranteed; nor do they form part of an offer or contract. If you require clarification on any points then please contact us, especially if you're traveling some distance to view. Please note that appliances and heating systems have not been tested and therefore no warranties can be given as to their good working order.

 **RICS** | Regulated
Estate Agent
and Letting Agent

[dexters.co.uk](https://www.dexters.co.uk)