



Warwick Road, TW2

£825,000

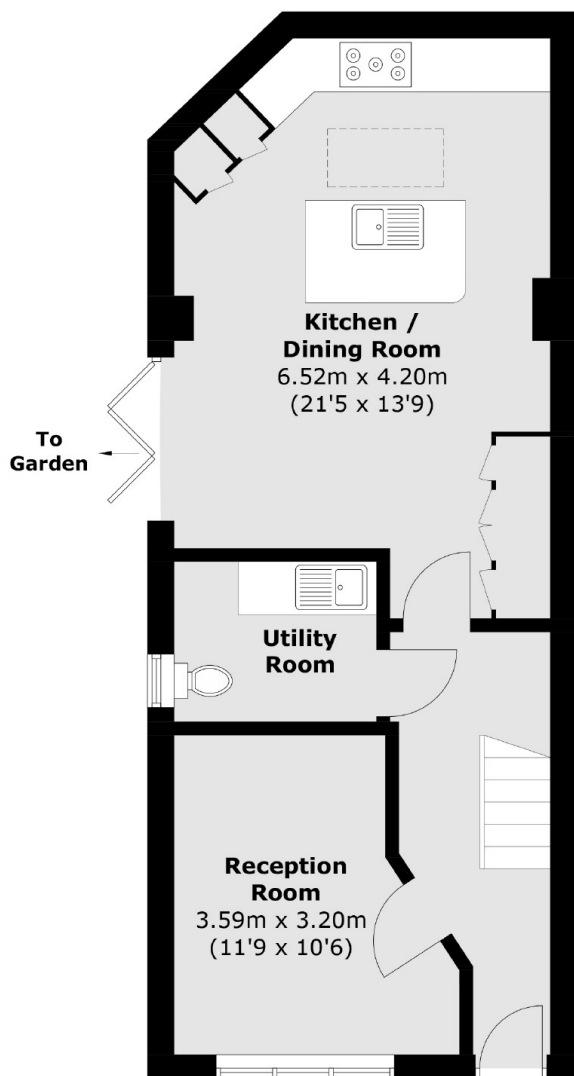
Offers Over £825,000. Offered with no onward chain is this stunning two double bedroom end of terrace newly built home which has been perfectly designed in keeping with its Victorian street. Benefitting from a larger than average South facing garden and an additional loft room this impressive home is arguably the best house on the market in its price bracket.

Warwick Road is a cul-de-sac close to the town centre where you will find an array of shops, restaurants and pubs. Twickenham station has a fast link to Waterloo and there are many outstanding primary & secondary schools nearby such as Waldegrave Girls. Twickenham Green is around the corner and regularly hosts many family fun days and local fairs.

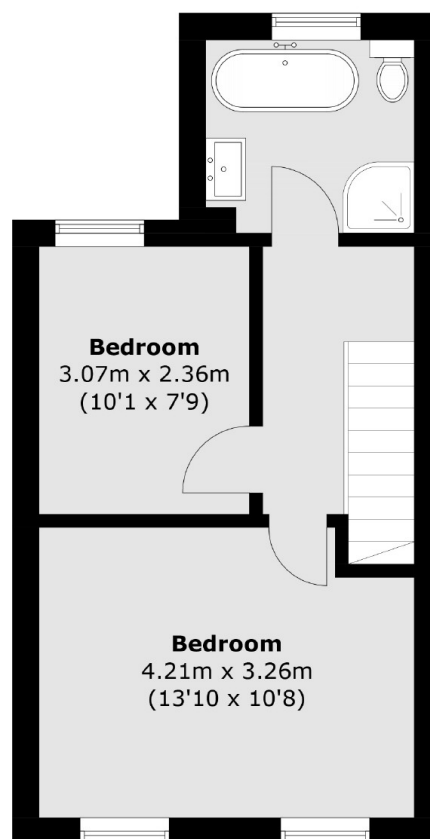
Features

- Two Double Bedrooms
- Air Source Heat Pump & Living Roof
- Larger Than Average South Facing Garden
- Additional Loft Room/Flexible Space
- Modern Bathroom With Freestanding Bath
- New Build Guarantee

Warwick Road, Twickenham, TW2



Ground Floor



First Floor

Total area (approx.): 80.1 sq. m (862.1 sq. ft)