



Lion Road, TW1

£799,950

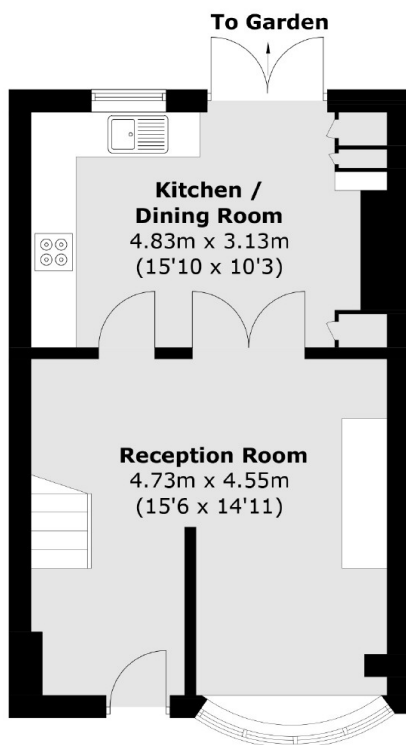
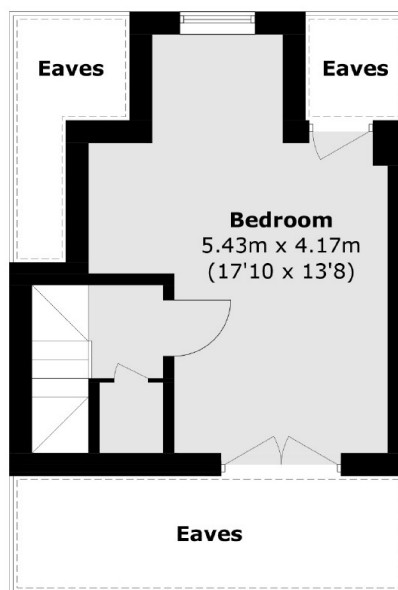
Offered with no onward chain is this impressive three double bedroom mid terrace house. The property benefits from having two bath/ shower rooms, a pretty private garden and scope to extend the kitchen further if required.

Lion Road is a highly desirable road located just off Twickenham high street where you will find a vast array of shops, bars and restaurants. Twickenham mainline train station is just a few hundred yards away and has fast links to London Waterloo.

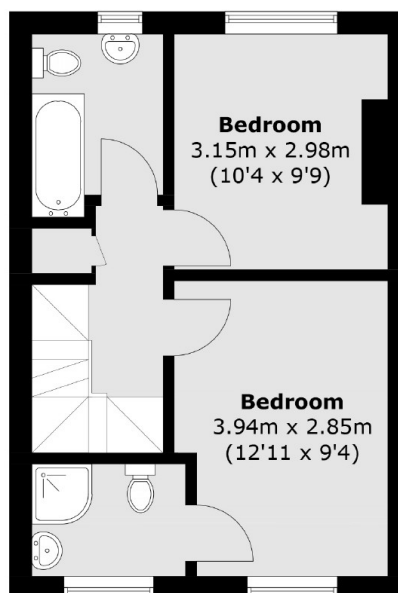
Features

- No Onward Chain
- Potential To Extend STPP
- Three Double Bedrooms
- Two Bath Shower Rooms
- Pretty Private Garden
- Central Location

Lion Road, Twickenham, TW1



Second Floor



Ground Floor

First Floor

Total area (approx.): 93.0 sq. m (1,001.1 sq. ft)
(Excluding Eaves)

Dexters

Twickenham
84 Heath Road
Twickenham
TW14BW
Sales
020 8744 0074

Energy Rating: D. We aim to make our particulars both accurate and reliable. However they are not guaranteed; nor do they form part of an offer or contract. If you require clarification on any points then please contact us, especially if you're traveling some distance to view. Please note that appliances and heating systems have not been tested and therefore no warranties can be given as to their good working order.

 **RICS** | Regulated
Estate Agent
and Letting Agent

dexters.co.uk