



Hanworth Road, TW4

£599,950

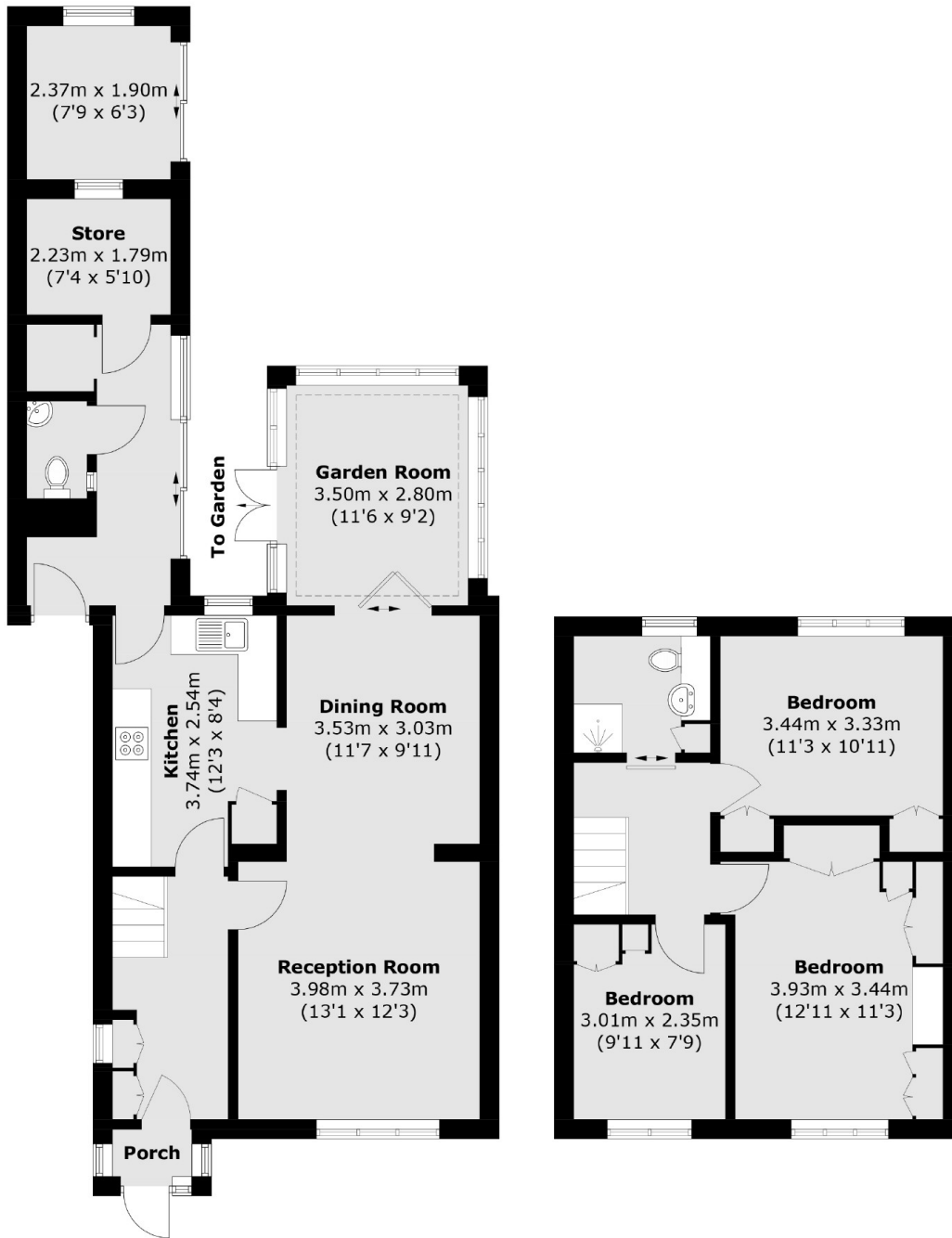
This wonderful three bedroom semi detached house has been renovated by the current owners and benefits from having a downstairs W.C, a modern three piece shower room, off street parking to the front and a large private garden to the rear.

Set back from Hanworth Road, this location offers convenient access in and out of Whitton, Twickenham, Hanworth and Hounslow town centres. There are fast trains from both Whitton and Hounslow Station and various bus routes along the way. With excellent schools in the area and Crane Park nearby, this is the perfect house for a growing family.

Features

- Planning Permission In Place To Extend Loft & Rear
- Modern Three Piece Shower Room
- Recently Renovated
- Large Garden
- Off Street Parking
- Planning Permission To Erect A Studio

Hanworth Road, Whitton, TW4



Ground Floor

First Floor

Approx Internal Area: 112.5 sq. m (1,211.0 sq. ft)

External Room: 5.5 sq. m (59.2 sq. ft)

Total: 118.0 sq. m (1,270.2 sq. ft)

Dexters

Twickenham
84 Heath Road
Twickenham
TW14BW

Sales
020 8744 0074

Energy Rating: C. We aim to make our particulars both accurate and reliable. However they are not guaranteed; nor do they form part of an offer or contract. If you require clarification on any points then please contact us, especially if you're traveling some distance to view. Please note that appliances and heating systems have not been tested and therefore no warranties can be given as to their good working order.

 **RICS** Regulated
Estate Agent
and Letting Agent

dexters.co.uk