



Manor Road, TW2

£399,950

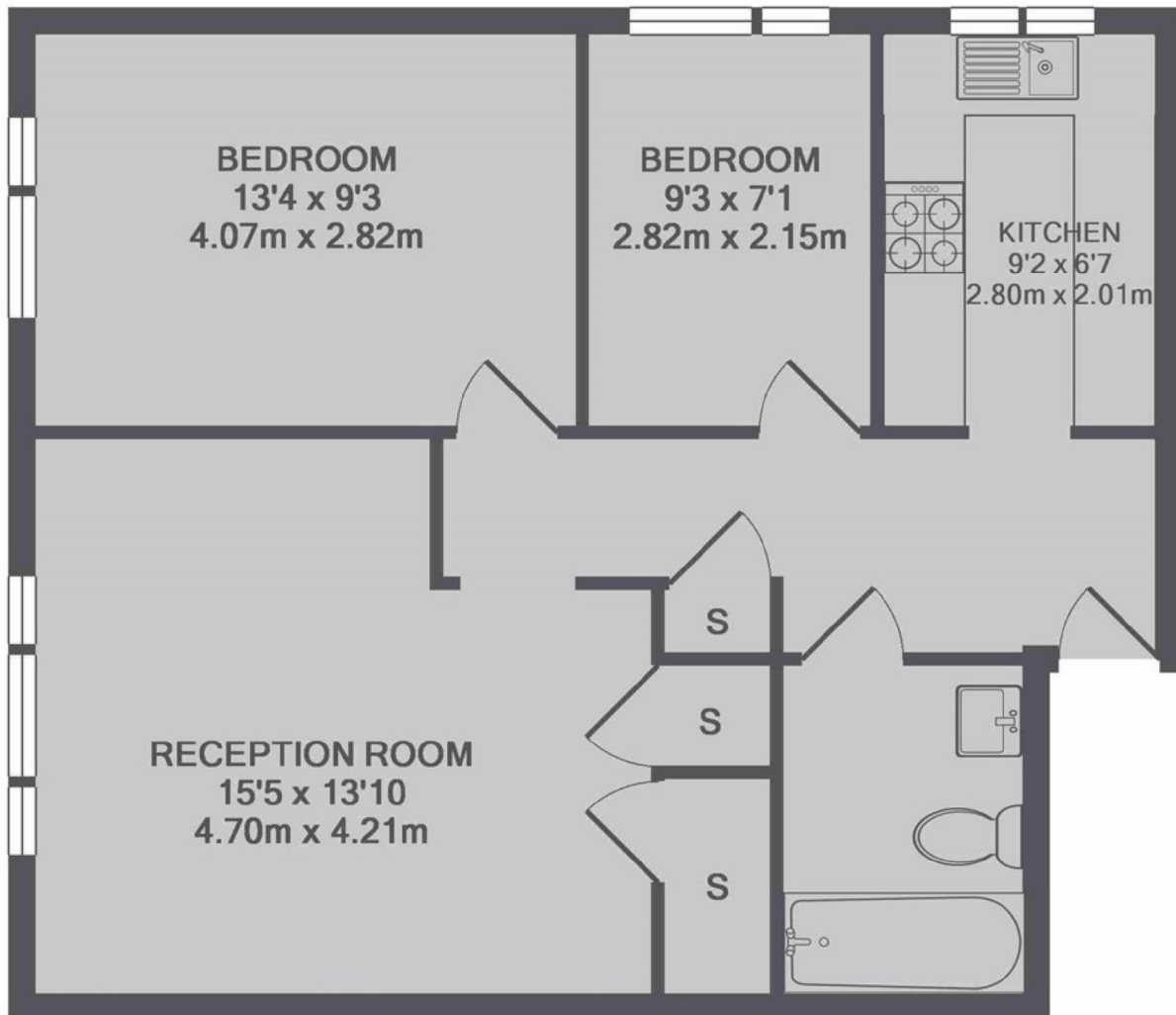
Offered with no onward chain is this spacious two double bedroom top floor apartment in lovely condition that benefits from having a garage in a block, access to communal gardens and a new lease on completion of the sale.

Osborne House is on Manor Road which is close to excellent schools such as Waldegrave Girls and Trafalgar. Twickenham Green and the high street is also less than a mile away which offers a wide variety of shops, pubs and restaurants.

Features

- Two Double Bedrooms
- No Onward Chain
- Garage
- Top Floor
- New Lease On Completion
- Lovely Condition

Manor Road, Twickenham, TW2



TOTAL APPROX. FLOOR AREA 641 SQ.FT. (59.5 SQ.M.)