



Clive Road, TW1

£1,075,000

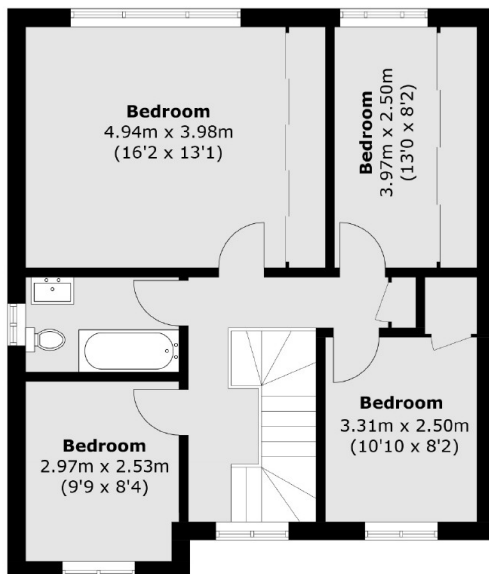
This detached four bedroom home needing modernisation has off street parking to the front, a large South facing garden to the rear, potential to extend and no onward chain.

Clive Road is a quiet cul de sac location off Strawberry Vale, close to the River Thames and within easy access to excellent schools. Strawberry Hill village and mainline train station are also close by as is Teddington high street with its vast array of shops, bars and restaurants.

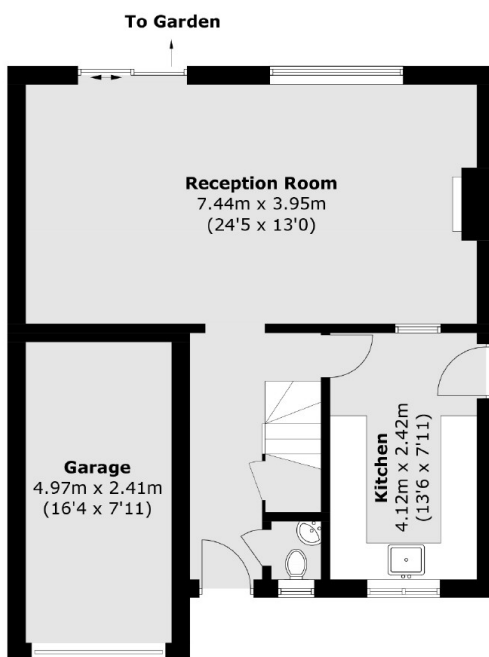
Features

- Four Bedrooms Detached Home
- Potential To Extend
- Modernisation Required
- No Onward Chain
- Off Street Parking
- Large South Facing Garden

Clive Road, Strawberry Hill, TW1



First Floor



Ground Floor

Total area (approx.): 112.1 sq. m (1,206.6 sq. ft)
Garage : 11.9 sq. m (128.0 sq. ft)