



Prospect Crescent, TW2

£425,000

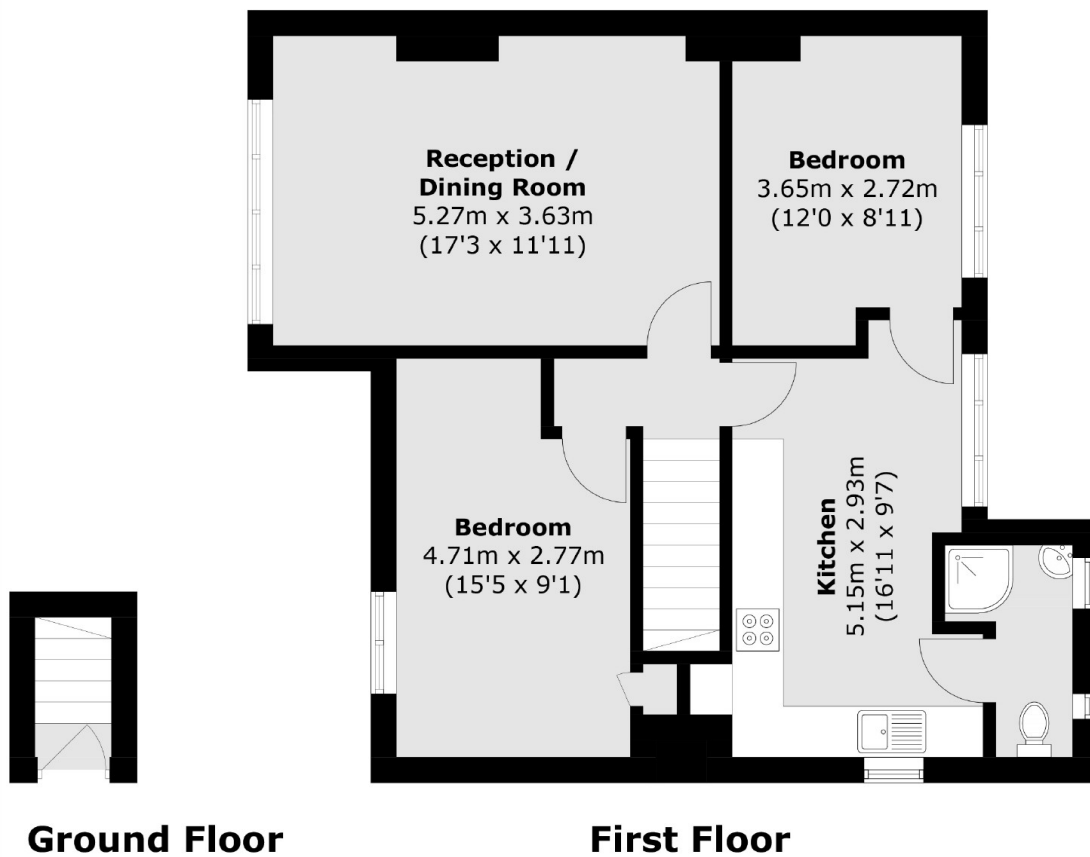
This spacious first floor maisonette boasts over 710sq feet of impressive accommodation which includes two double bedrooms, a large dual aspect kitchen and a bright reception room. The property also benefits from having a large and sunny private garden.

Prospect Crescent is a quiet crescent just off Whitton high street where you will find a vast array of shops, cafés and restaurants including Starbucks, Sainsbury's and Tesco. The mainline train station is also off the high street and offers a fast train to London Waterloo.

Features

- Two Double Bedrooms
- Large Private Garden
- Recently Renovated Bathroom
- Lots of On Street Parking Available
- Double Glazed Windows
- Excellent Condition

Prospect Crescent, Whitton, TW2



Total area (approx.): 66.1 sq. m (711.5 sq. ft)