



Queensbridge Park, TW7

£2,095 Per calendar month

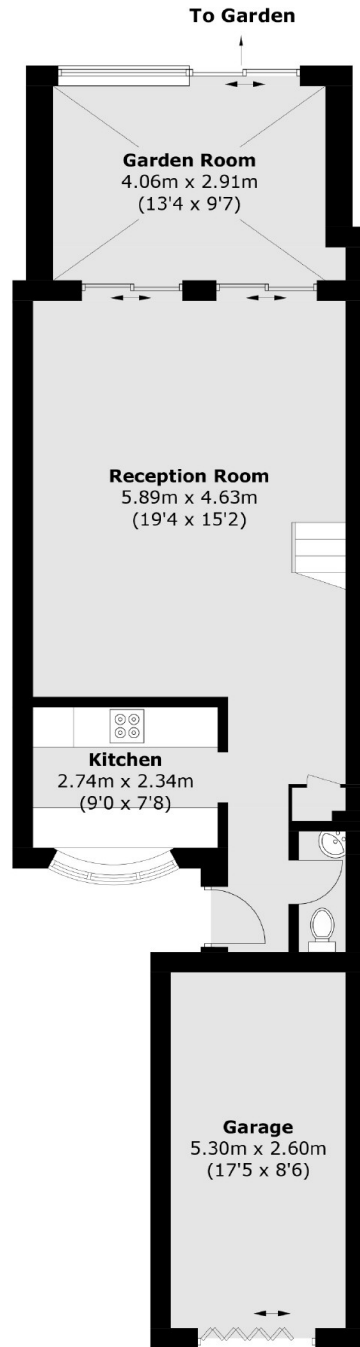
This spacious three bedroom family home located within a quiet cul-de-sac offers a large reception room, modern kitchen, off street parking and a private garden.

Queensbridge Park is conveniently located for easy access to Twickenham, Whitton and Isleworth Town Centres, transport links and amenities.

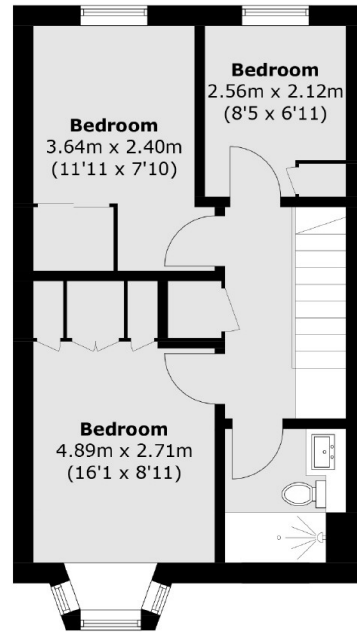
Features

- Three Bedrooms
- Private Rear Garden
- Off Street Parking
- Modern Kitchen
- Conservatory
- Cloakroom

Queensbridge Park, Isleworth, TW7



Ground Floor



First Floor

Total area (approx.): 92.6 sq. m (996.7 sq. ft)

Garage (approx.): 14.0 sq. m (150.7 sq. ft)