



## Cole Park Road, TW1

£4,250 Per calendar month

Available to rent is this impressive four bedroom detached modern home built in 2018 located in the heart of Twickenham. The property benefits from having two bathrooms/shower rooms, a downstairs W.C and off street parking to the side.

Cole Park Road is one of Twickenham's finest and most desirable roads located just a moments' walk to the mainline station with its fast and frequent routes to and from London Waterloo. The high street is just around the corner and there are three outstanding schools nearby which are Orleans, St Stephen's and St Mary's.

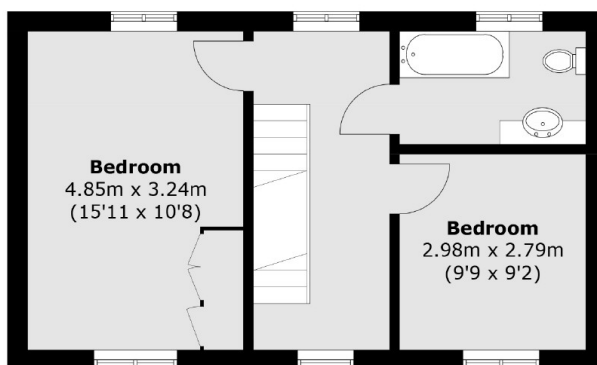
### Features

- Garden Backing Onto The River Crane
- Close To Station
- Off Street Parking
- Central Location
- Downstairs W.C
- Two Bathrooms

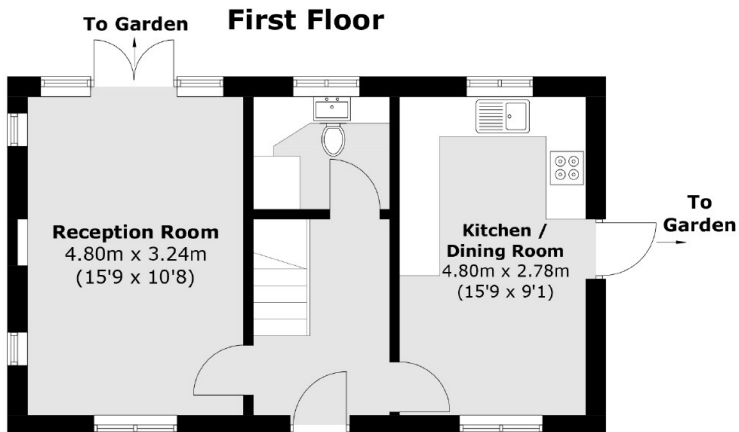
# Cole Park Road, Twickenham, TW1



**Second Floor**



**First Floor**



**Ground Floor**

Total area (approx.): 128.1 sq. m (1,378.9 sq. ft)