



London Road, TW1

£345,000

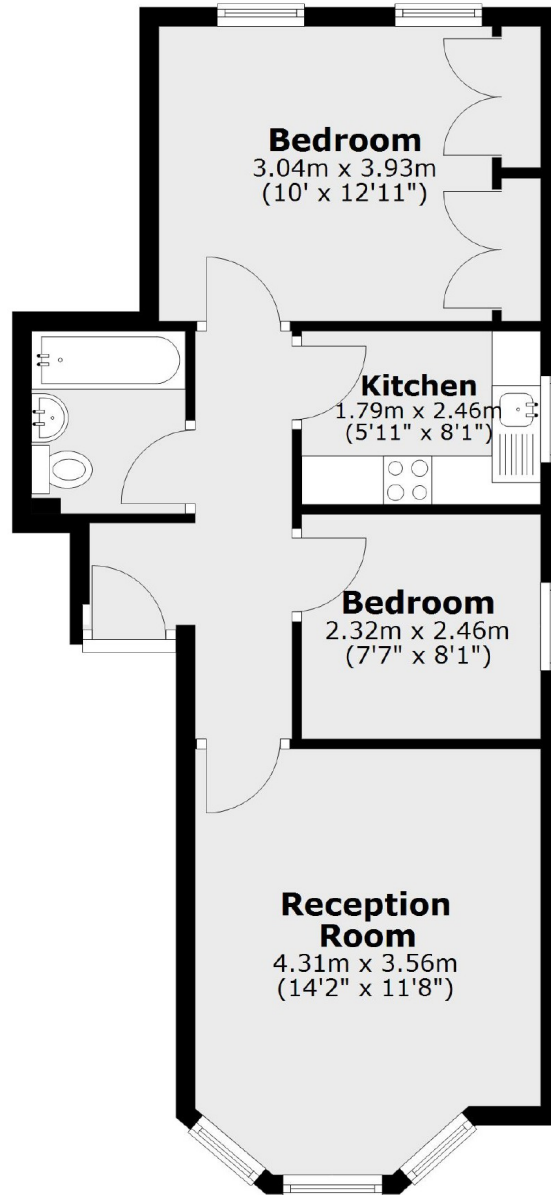
This two bedroom ground floor apartment is perfectly located in the centre of Twickenham with fantastic communal gardens to the rear to enjoy. Further benefits include no onward chain and a long lease remaining.

London Road is located moments from Twickenham mainline station with it's fast links to Waterloo. Twickenham high street is also nearby where you will find a vast array of shops, pubs and restaurants.

Features

- Two Bedrooms
- Purpose Built Apartment
- Communal Gardens
- Ground Floor
- Good Condition
- No Onward Chain

London Road, Twickenham, TW1



Total area: approx. 46.7 sq. metres (502.3 sq. feet)