



Brunswick Close, TW2

£699,950

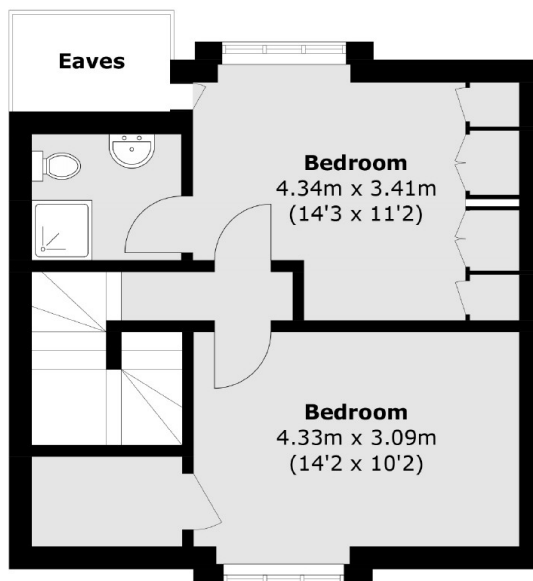
Boasting over 1000 sq feet of space this impressive three bedroom split level apartment is larger than a lot of three bedroom houses. It is offered with no onward chain, has two bath/shower rooms, a private garden and an allocated parking space.

Brunswick Close is in an ideal position for catchment into some of the area's best schools including Waldegrave Girls. There are excellent transport links nearby including Strawberry Hill and Fulwell stations, bus routes to Richmond and Kingston as well as easy access into Twickenham high street.

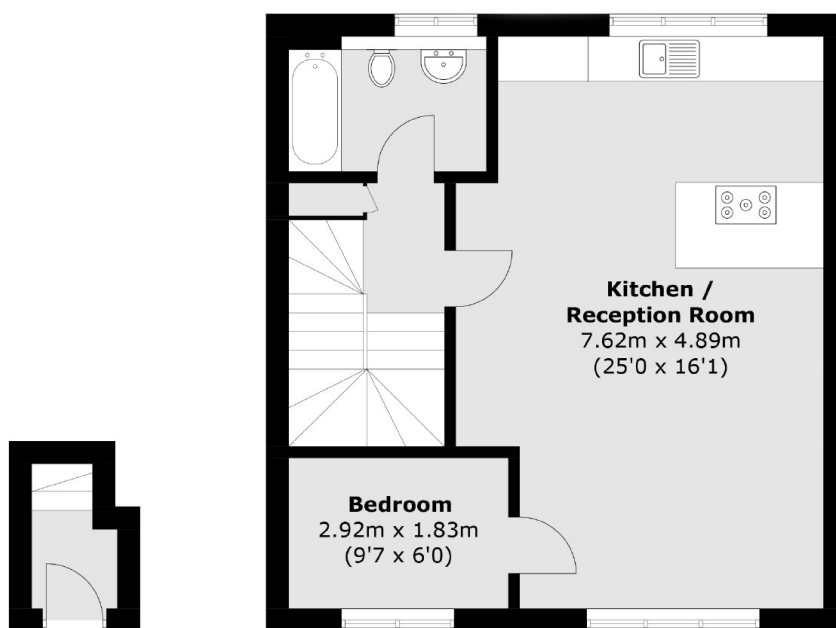
Features

- Three Bedrooms
- Two Bath / Shower Rooms
- No Onward Chain
- Private Garden
- Split Level
- Private Parking Space

Brunswick Close, Twickenham, TW2



Second Floor



Ground Floor

First Floor

Total area (approx.): 95.6 sq. m (1,029.0 sq. ft)
(Excluding Eaves)