



London Road, TW1

£6,250 Per calendar month

This six bedroom Edwardian detached family home has been beautifully refurbished and extended, combining period features and stylish modern living.

London Road runs from Twickenham town centre past Twickenham mainline station and down to the A316 with its links into London via the M3, M4 and M25. The area boasts some of the best state and private schools in the area and is within close proximity to the River Thames.

Features

- Detached Edwardian Home
- Five Double Bedrooms
- Three Reception Rooms
- Garage
- Large Landscaped Garden
- Off Street Parking



London Road, TW1

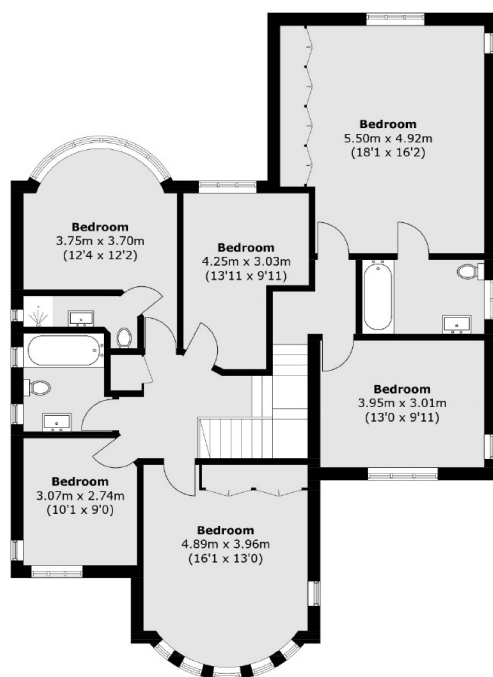
Occupying almost 3000 sq.ft of substantial living accommodation and arranged over two floors, this fantastic home offers three large reception rooms to the front and rear, a downstairs cloakroom and a separate utility room. To the rear of the house there is an eye-catching kitchen/family/dining room.

On the first floor you have six bedrooms, comprising of a master with ensuite, secondary bedroom again with ensuite and four further double bedrooms serviced by a large family bathroom.

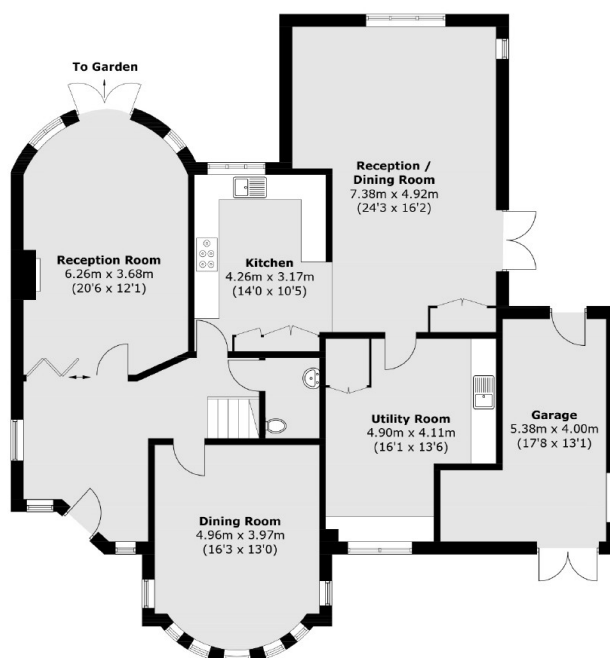
The garden has plenty of entertaining vs play space for families, side access and a large garage perfect for additional storage. There is also a driveway offering ample off-street parking.



London Road, Twickenham, TW1



First Floor



Ground Floor

Total area (approx.): 265.5 sq. m (2,857.7 sq. ft)
(Including Garage)