

Butts Crescent, TW13

£650,000

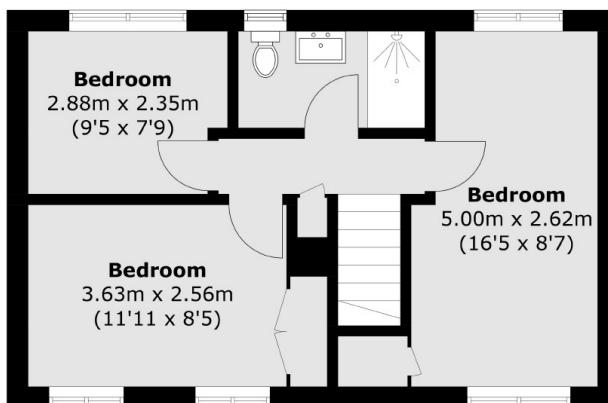
This fantastic four bedroom family home has been renovated to an excellent standard throughout by the current owners and offers over 1200 square feet of living space. The property also benefits from having off street parking to the front.

Butts Crescent is accessed off the Twickenham Road which offers various bus routes in and out of Twickenham and Hampton. The A316 is also nearby which provides a convenient link into London and down to the M3. David Lloyd gym is just around the corner, as is Sainsbury's, Homebase and Wickes.

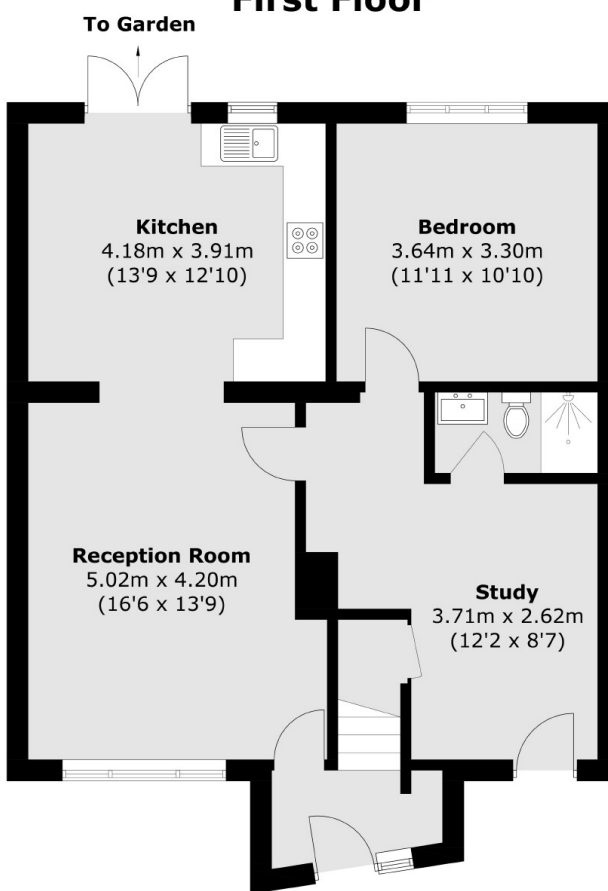
Features

- Four Bedrooms
- Off Street Parking
- Excellent Condition
- Private Garden
- Good Transport Links
- Close To Excellent Schools

Butts Crescent, Feltham, TW13



First Floor



Ground Floor

Total area (approx.): 115.3 sq. m (1,241.0 sq. ft)