



Colne Road, TW2

£642,500

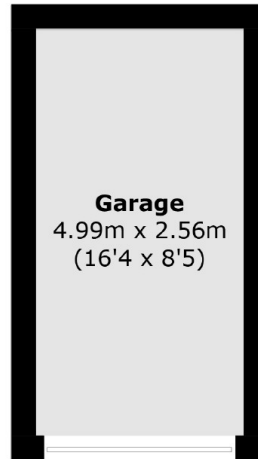
Offered with no onward chain is this spacious three bedroom end of terrace house that benefits from having side access, a downstairs W.C, the largest garden in the terrace and a separate garage.

Colne Road is an extremely desirable road, just a quarter of a mile from the town centre and within easy reach of Twickenham Green and Twickenham mainline station where you can get a fast link to London Waterloo. The area is also within Waldegrave Girls secondary catchment and other great primary schools.

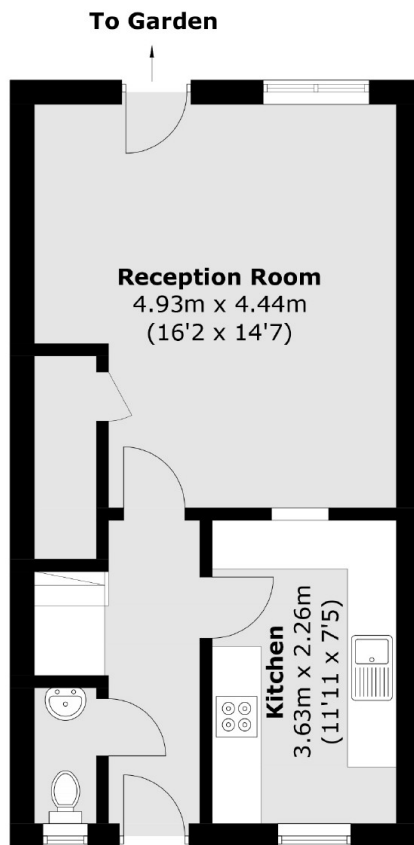
Features

- Three Bedrooms
- End Of Terrace
- Garage
- No Onward Chain
- Side Access
- Downstairs W.C

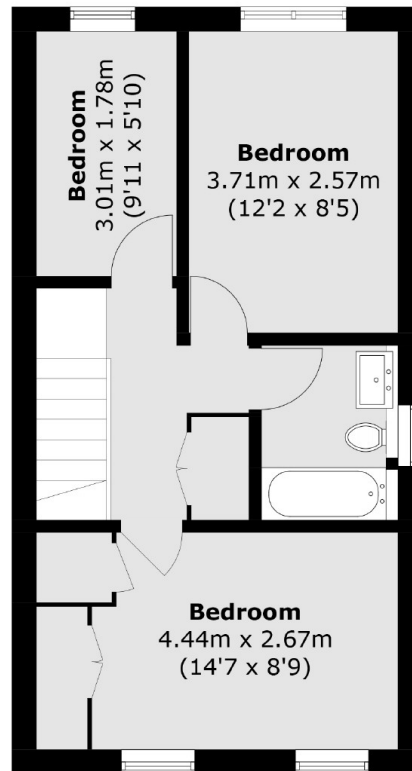
Colne Road, Twickenham, TW2



(Not Shown In Actual
Location / Orientation)



Ground Floor



First Floor

Total area (approx.): 78.7 sq. m (847.1 sq. ft)
Garage area (approx.): 12.8 sq. m (137.8 sq. ft)