



Manor Road, TW2

£475,000

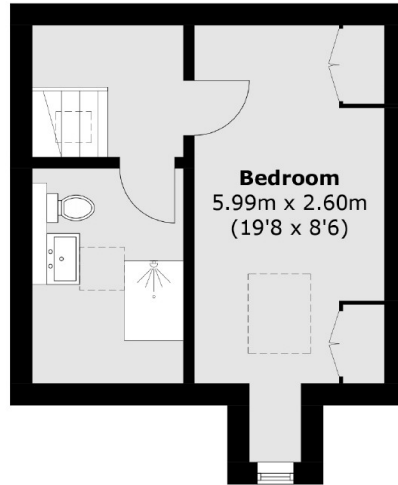
Occupying almost 900sq feet of impressive accommodation this stunning two double bedroom split level apartment situated in a beautiful Victorian building. The property benefits from having a long lease and access to well maintained communal gardens.

Manor Road is close to excellent schools such as Waldegrave Girls and Trafalgar and Archdeacon. Twickenham Green and the high street is also less than a mile away which offers a wide variety of shops, pubs and restaurants.

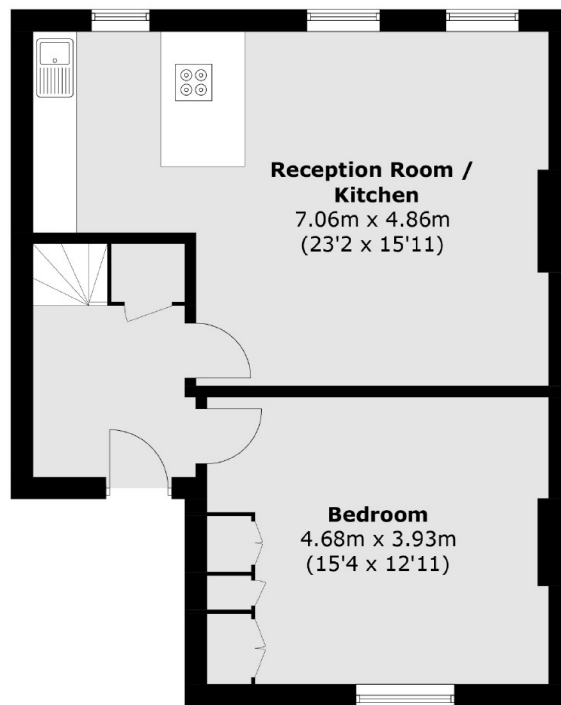
Features

- Two Double Bedrooms
- Communal Gardens
- Split Level
- Excellent Condition
- Modern Three Piece Shower Room
- Long Lease

Manor Road, Twickenham, TW2



First Floor



Ground Floor

Total area (approx.): 81.0 sq. m (871.8 sq. ft)