



Hampton Road, TW2

£1,750 Per calendar month

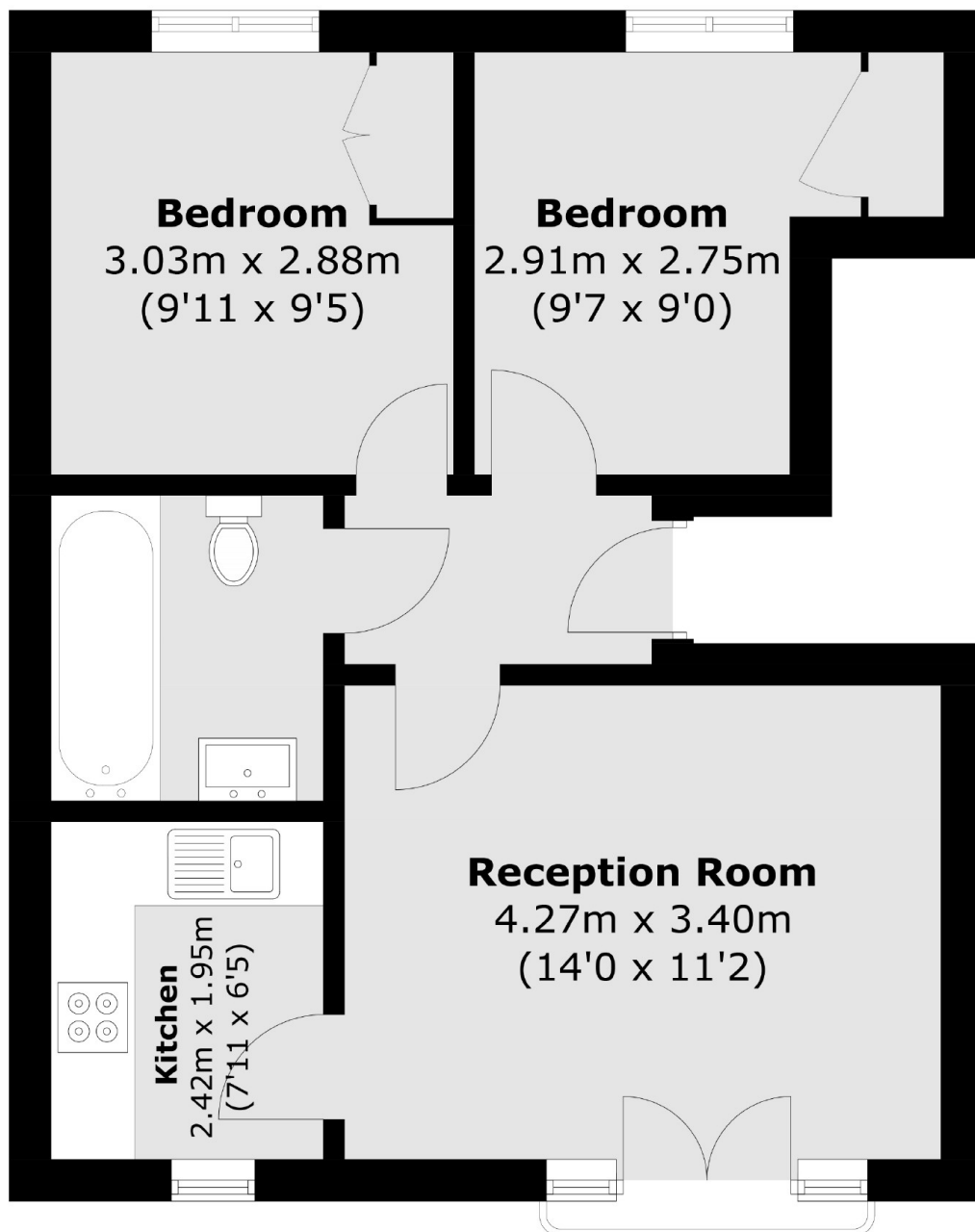
A fantastic opportunity to rent this stylish two bedroom modern apartment. The property is situated in a gated development next to Twickenham Green and has the added benefit of a security entry system and access to a shared courtyard.

Hampton Road is nestled between Twickenham and Strawberry Hill and is perfect for an array of transport links which will take you into many town centres. Both Twickenham and Strawberry Hill stations have access to London Waterloo.

Features

- Modern Apartment
- Two Double Bedrooms
- Newly Refurbished
- Gated development
- Galley Kitchen
- Close To Twickenham Green

Hampton Road, Twickenham, TW2



Total area (approx.): 45.8 sq. m 493.0 sq. ft)