



Marsh Farm Road, TW2

£550,000

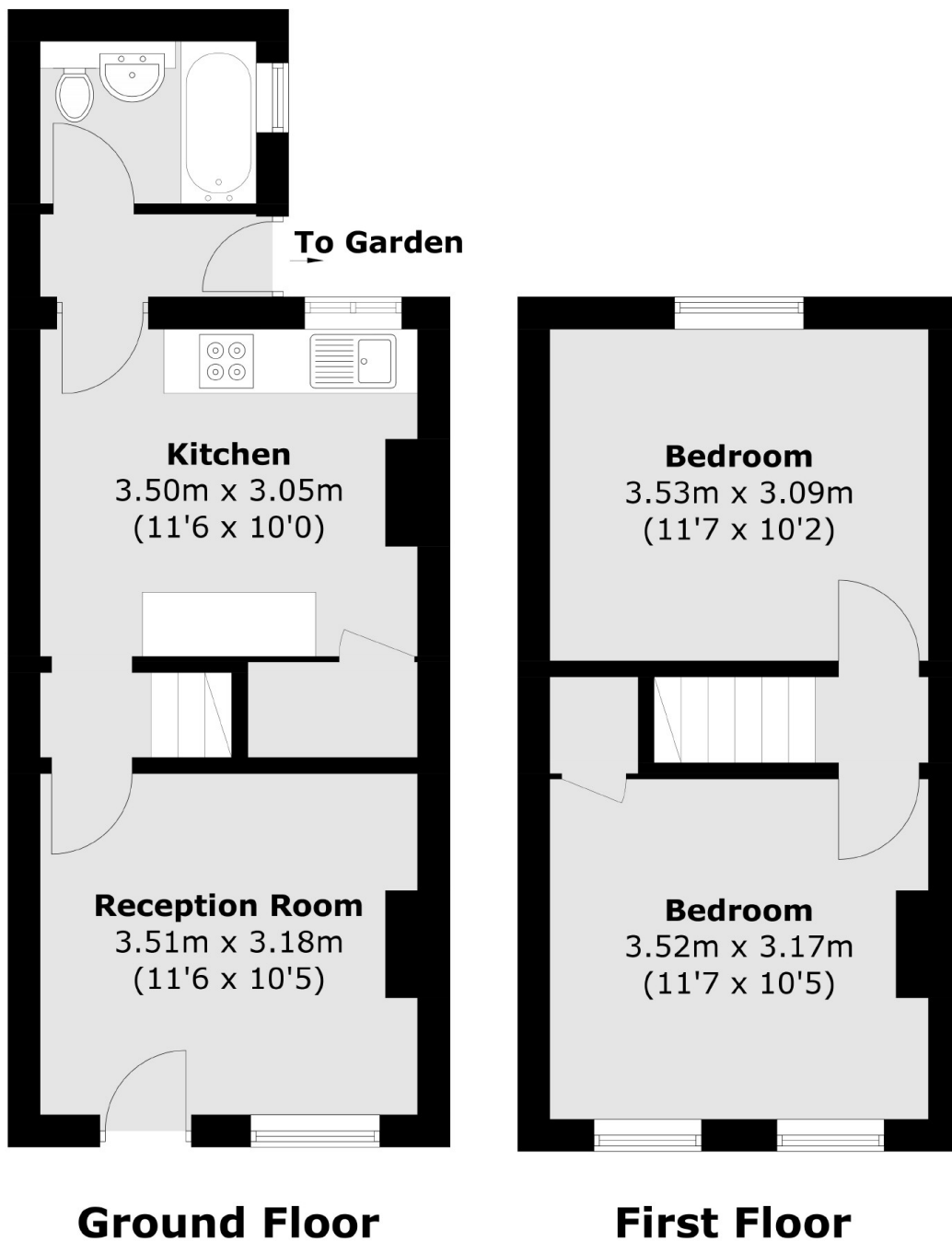
Offered with no onward chain this two bed Victorian cottage is perfectly located for commuters and professionals close to Twickenham Green. The property benefits from a West facing garden, potential to extend and falls within great school catchments.

Marsh Farm Road is a quiet cul-de-sac close to Twickenham town centre where you will find an array of shops, restaurants and pubs. Twickenham mainline station is half a mile away and has a fast link to Waterloo, and there are many excellent schools nearby.

Features

- Victorian House
- Two Bedrooms
- Popular Street
- Potential To Extend
- West Facing Garden
- No Onward Chain

Marsh Farm Road, Twickenham, TW2



Total area (approx.): 57.2 sq. m (615.7 sq. ft)